

**PETRA DEVELOPMENT AND TOURISM REGION AUTHORITY  
(PDTRA)**



**سلطة إقليم البترا التنموي السياحي**

**REQUEST FOR PROPOSAL  
(Ancient City of PETRA Video Surveillance system project )**

**Date: 11 /11/2014**

**RFP Ref. 8/2014**

**Deadline: 3 /12/2014**

## TABLE OF CONTENTS

1.0 INTRODUCTION AND BACKGROUND.....	4-5
2.0 DESCRIPTION OF PROJECT.....	6
3.0 SYSTEM FEATURES .....	7
4.0 AREAS TO BE COVERED .....	8-11
5.0 TECHNICAL Proposal.....	12-20
6.0 TERMS & CONDITIONS.....	21
7.0 MAINTENANCE & IT SUPPORT.....	22
8.0 TRAINING ON SITE .....	22
9.0 WARRANTY .....	22
10.0 EVALUATION CRITERIA.....	23

## **DISCLAIMER STATEMENT**

**This document is a request for proposals (RFP) and shall not be construed in whole or part as a direct or indirect order, or as a request or authorization to perform work or provide goods. The Petra Development and Tourism Region Authority is under no obligation to award a contract in response to this RFP's proposals.**

**The information in this RFP is intended to enable the recipient to formulate a proposal in response to the project requirements set forth. Although this RFP contains adequate information, bidders must conduct their own independent diligent assessments and investigations regarding the subject matter of this RFP.**

**The Petra Development and Tourism Region Authority does not guarantee the accuracy, reliability, correctness and/or completeness of the information contained within this RFP and any attached documents. The bidder shall be solely responsible for identifying and requesting any further information that may be required to prepare a complete proposal.**

**This RFP shall constitute part of the contract that will be signed between the Petra Development and Tourism Region Authority and the winning bidder.**

# 1.0 Introduction and Background

## 1.1 Background

PDTRA is founded in 2009; Petra Development Tourism Region Authority (PDTRA) is a legal, financial and administrative independent authority that aims to develop the region's tourism, economy, society, culture and community.

The Authority is managed by a board of commissioners that consists of five members including the president and vice president with a member who is authorized to manage the Petra Reserve.

The members are appointed by the Prime Ministry and approved by His Majesty King Abdullah.

Main PDTRA objectives:

- Administrate and supervise the Petra Region.
- Manage and develop the tourism industry in Petra and coordinate with national and international entities that are related to the economic sector.
- Provide a desirable investment environment to engage in various economic activities.
- Contribute to the development of comprehensive strategies for the protection, maintenance and restoration of archaeological sites, in coordination with the Department of Antiquities.
- Identify the areas and sites of heritage value in the region, which can be used for tourism purposes.
- Enhance the social status for the local committee and private institutions, and provide support to the traditional crafts projects and the tourism industry.
- Protect the environment in the region, including water resources, natural resources and biodiversity, by setting the standards, rules and regulations.
- Develop plans for human resource development.

## **1.2 RFP Purpose**

- Petra Development tourism region authority is seeking proposals to secure locations in the historical city PETRA; this project must ensure the coverage of locations by advance video surveillance system.
- Our goal is to build a highly secure and green system powered by solar and meets all harsh environment-operating standards.

## **1.3 Clarification Questions**

All inquiries in respect to this RFP are to be addressed to the Petra Development and Tourism Region Authority in writing by e-mail or fax with the subject "RFP Ref, "Petra-Video Surveillance System ". Inquiries may be addressed only to:

n.erawadieh@pra.gov.jo or fax +962-3-2157091, by and may be received no later than first week after announced. Responses will be sent in writing no later than 10 days of announcing.

## **1.4 QUALITY ASSURANCE**

PETRA DEVELOPMENT AND TOURISM REGION AUTHORITY desires a system that will be capable of satisfying its security needs for a minimum of ten years.

## **2.0 DESCRIPTION OF PROJECT**

### **2.1 SCOPE OF WORK**

PETRA DEVELOPMENT AND TOURISM REGION AUTHORITY is requesting quotes for a video Surveillance security system solution at ten different locations in the historical city PETRA, based on the attached Map.

### **2.2 The system should achieve the following points:**

1. Covering the target locations of Petra with full HD surveillance Cameras/CCTV.
2. Video surveillance system will be connected to PDTRA-main building through the suitable connection. Knowing that the proposed locations don't have any type of data lines connections nor power connectivity. except that connection between treasury ( Alkhaznah ) & PDTRA-main building ,4Mbps wireless connection .

### 3.0 System Features

- The proposed locations do not have any type of data connections nor power connectivity. Bidders are responsible to design and implement their network, connecting it to PDTRA building and source their system by solar power.
- Please note the sensitivity of the area where the system will be installed, no visual distortion of the historical places is allowed.
- The bidder must show a complete system design justifying each element and their selected specs.
- All target areas should be covered with IR illuminators system ,integrated with the suggested CCTV .
- Data line connection (between treasury ( Alkhaznah )& PDTRA-main building)is available , 4mbps wireless connection is now connected .
- When the connection is down, the camers should keep working and recording on local storage ( SD cards ).
- Failover scenario , should be available & clear .

- **4.0 Areas to be covered**

There are ten locations, distributed over Petra site, planned to be covered by a complete integrated, intelligent & green (video Surveillance security system) as attached Map.

The proposed locations don't have any type of connectivity to PDTRA building (except that connection between treasury ( Alkhaznah ) & PDTRA-main building ,4Mbps wireless connection) . and also don't have any source of power(except PDTRA Building and Um Sayhoon entrance), bidders are responsible to design and implement their network and source their system by power source.

The bidder must show a complete system design justifying each element and their specs.

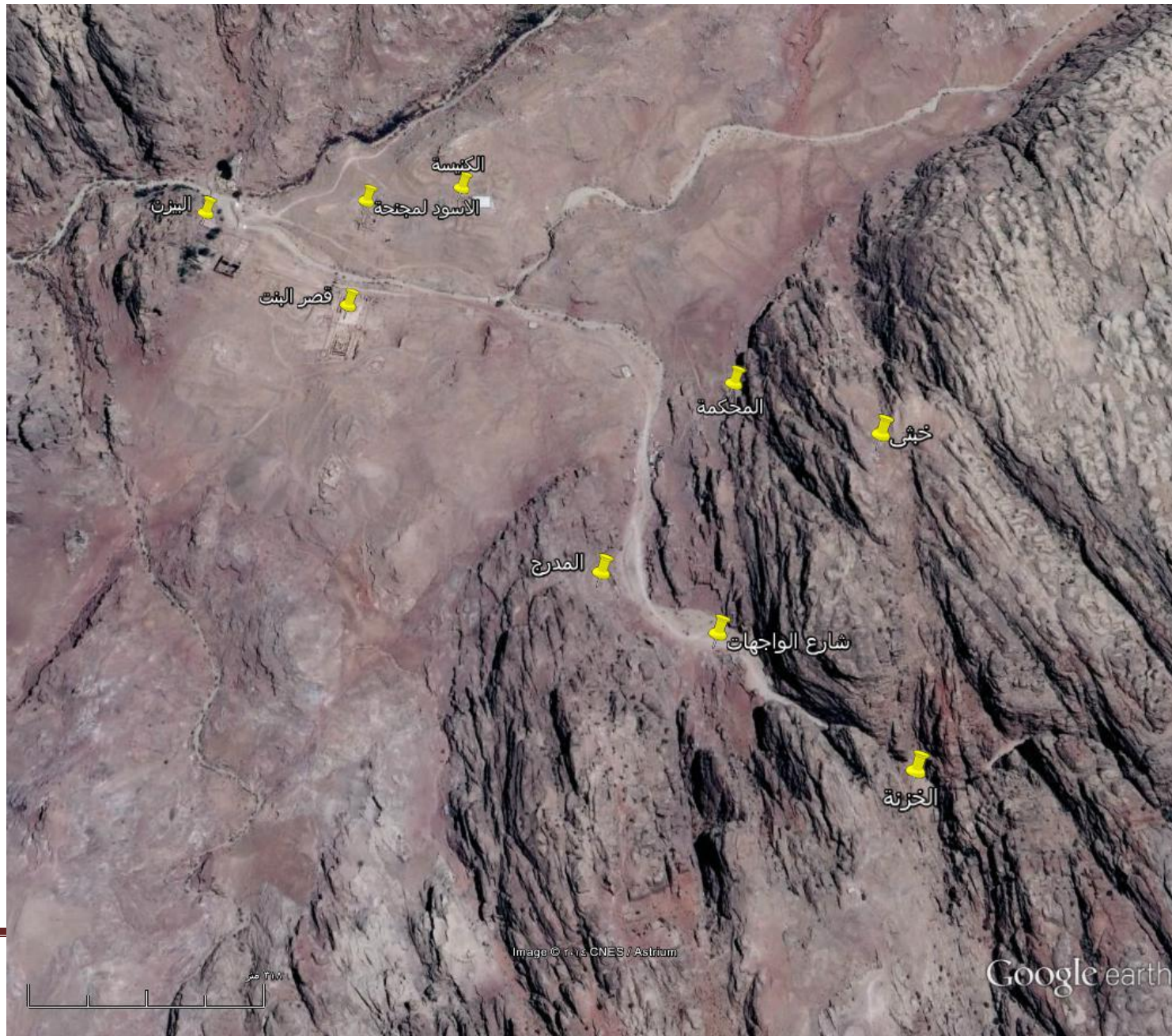
The locations as the following:

- ✓ Girl's Palace ( Qasier Albint )
- ✓ Theater (Mudaraj )
- ✓ The court (Almhkamah)
- ✓ treasury ( Alkhaznah )
- ✓ um Sayhoon entrance(El Turkmanih)
- ✓ the Dam entrance
- ✓ The Facades street
- ✓ winged Lions Temple
- ✓ um Sayhoon entrance(التركمانية)
- ✓ Basin



✓ 4.1 Table of quantities (locations & cameras, IR system)

Equipment and Quantities Location	Varifocal Camera	Zoom Camera	PTZ with IR Build in	IR System and distance	Fisheye camera
Church الكنيسة	1	3	1	1 (650 Meters) or as required	1
winged Lions Temple معبد الاسود المجنحة	To be monitored from Church				-
Girl's Palace قصر البنات	To be monitored from Church				-
Court المحكمة	To be monitored from Church				
Khobtha خبثى	-	-	1	1(650 Meters) or as required	1
The theater المدرج	To be monitored from Khobtha				-
The Facades street شارع الواجهات	3	-	-	-	-
Khazneh الخزنة	-	-	1	1 panoramic	-
um Sayhoon entrance (التركمانية)			1	1(650 Meters) or as required	-
the Dam entrance	To be monitored from Pdtra Building		2	0	-
Basin		3	1	0	-



## 4.2 Location Coordinates

Location	Coordinates	
	Latitude	Longitude
Church الكنيسة	30°19'50.43"N	35°26'38.76"E
winged Lions Temple معبد الاسود المجنحة	30°19'49.66"N	35°26'32.59"E
Girl's Palace قصر البنات	30°19'43.35"N	35°26'32.07"E
Court المحكمة	30°19'38.85"N	35°26'56.14"E
Khobtha خبثى	30°19'35.15"N	35°27'3.69"E
The theater المدرج	30°19'28.75"N	35°26'48.64"E
The Facades street شارع الواجيات	30°19'25.99"N	35°26'55.34"E
Khazneh الخزنة	30°19'19.80"N	35°27'5.37"E
Um Sayhoon entrance	30°20'32.41"N	35°27'5.75"E
the Dam entrance	30°19'18.50"N	35°27'40.32 E
Basin	30°19'48.52N	35°26'22.37E

## 5.0 TECHNICAL PROPOSAL

**The proposed system must have the following major parts:**

1. Security Surveillance Cameras; (Location security camera, installation site security camera)
2. IR System
3. Solar power system
4. Network connectivity
5. Server , storage , VMS and Edge storage (SD card)
6. Video management system
7. UPS & server rack cabinet

## Security Surveillance Cameras specs

### a. PTZ Camera with Super low light Day and night 2MP with Extreme WDR and 28x Zoom

<b>Image System</b>	
Image pickup device	1/2.8" Progressive Scan CMOS 2MP
<b>Electric</b>	
Minimum illumination	Color: 0.1 lux at F1.6 (30 IRE, 2400°K); B/W: 0.05 lux at F1.6 (30 IRE, 2400°K)
Mechanical IR Cut Filter	Yes
IR working distance	Up 200m
Built-in Lens	Zoom, f4.3-129 mm / F1.6 - 5.0
Day/Night mode	Auto / manual
Horizontal Viewing Angle	70.4° - 2.25°
IRIS	DC
Focus	Auto
Control	Remote manual control; 250 preset points, patrol, Autopan
Serial Port	RS485
Rotation	Horizontal Continuous rotation , vertical +90/-40 degree
White balance	ATW1 / Manual
Electric shutter	1/5 - 1/2,000 sec (manual mode); 1/5 - 1/10,000 sec (auto mode)
Image Enhancement	Extreme WDR (140 dB); White balance: automatic, hold and manual; Brightness; Contrast; Sharpness; Automatic gain control; 2D+3D Digital Noise Reduction; Flickerless; Defogging; Advanced image stabilizer
Multi-Streaming	Simultaneous dual streams; H.264, MJPEG
Video Resolution and frame rate	30 fps at 1920 x 1080; 30 fps at 1280 x 720; 30 fps at 640 x 480; 15 fps at 320 x 240
Local Storage	MicroSDHC/MicroSDXC memory card slot (with 64GB Card)
<b>Network</b>	
Ethernet Port	1, Ethernet (10/100 Base-T), RJ-45 connector
Protocol & Service	TCP, UDP, HTTP, HTTPS, DHCP, PPPoE, RTP, RTSP, IPv6, DNS, DDNS, NTP, ICMP, ARP, IGMP, SMTP, FTP, UPnP, SNMP, Bonjour, Sony VISCA, Pelco D, Pelco P
	Onvif, S profile
<b>Power Specs</b>	
Power Source	High PoE (IEEE802.3at) / 25.44 W (built-in heater and fan on)
Application	Wall, Corner, Pole
<b>Environmental</b>	
Operating temperature	-10 °C ~ 50°C (-14°F ~ 122°F)
Operating humidity	10% ~ 85% RH
Approvals and certificates	CE, FCC ,
Protection class	Weatherproof (IP66) and Vandal Proof
<b>Accessory</b>	
	Wiper and water tank 5L
	Heater

**b. Verifocal Camera 3MP Bullet Adaptive IR, WDR, Vari-focal**

<b>Image System</b>	
Image pickup device	1/3" Progressive Scan CMOS 3MP
<b>Electric</b>	
Minimum illumination	Colour: 0.1 lux at F1.4 (30 IRE, 2400°K); B/W: 0 lux (IR LED on))
Mechanical IR Cut Filter	Yes
Day/Night mode	yes
IR	Working distance 30m
Horizontal Viewing Angle	68.5°~27.8°
Focal Length / Aperture	Vari-focal, f3 - 11 mm
Electric shutter	1/5 ~ 1/2,000 sec (manual mode); 1/5 ~ 1/10,000 sec (auto mode)
Image Enhancement	Superior WDR (107 dB); White balance: automatic, hold, and manual; Brightness Contrast; Sharpness(auto); Auto gain control; Digital noise reduction; Flickerless
Multi-Streaming	Simultaneous dual streams
<b>Network</b>	
Ethernet Port	1, Ethernet (10/100 Base-T), RJ-45 connector
<b>Power Specs</b>	
Power Source	PoE Class 2 (IEEE802.3af)
<b>Environmental</b>	
Operating temperature	-40 °C ~ 50°C (-40°F ~ 122°F)
Operating humidity	10% ~ 85% RH
Environmental Casing	Weatherproof (IP66 rated); Vandal proof metal casing (IK10)
Approvals	CE ,FCC , IP66, IK10 (metal casing)
Local Storage	support SD card / 64 GB

**c. Zoom Camera 2MP, Zoom Bullet , Adaptive IR, WDR, 25x Zoom Lens**

<b>Image System</b>	
Image pickup device	1/2.8" Progressive Scan CMOS 2MP
<b>Electric</b>	
Minimum illumination	Color: 0.1 lux at F1.6 (30 IRE, 2400°K); B/W: 0 lux (IR LED on)
IR working distance	Up 40m
Mechanical IR Cut Filter	Yes
Built-in Lens	Zoom, f4.3 - 129 mm / F1.6 - 5.0 , 25x optical ;
Day/Night mode	Auto / manual
Horizontal Viewing Angle	60.1° ~ 2.5°
White balance	ATW1 / Manual
Electric shutter	1/5 ~ 1/2,000 sec (manual mode); 1/5 ~ 1/10,000 sec (auto mode)
Image Enhancement	Extreme WDR (120 dB); White balance: automatic, hold, and manual; Brightness; Contrast; Sharpness (auto); Auto gain control; 2D+3D digital noise reduction; Flickerless; Defogging; Digital image stabilizer
Multi-Streaming	Simultaneous dual streams
Video Resolution and fame rate	30 fps at 1920 x 1080; 30 fps at 1280 x 720; 30 fps at 800 x 600; 30 fps at 640 x 480; 15 fps at 320 x 240
SNR	49dB
Local Storage	MicroSDHC/MicroSDXC memory card slot (with 64GB Card)
<b>Network</b>	
Ethernet Port	1, Ethernet (10/100 Base-T), RJ-45 connector
<b>Power Specs</b>	
Power Source	PoE Class 3 (IEEE 802.3af) and DC 12V
Application	Ceiling mount/Pole mount
<b>Environmental</b>	
Operating temperature	-40 °C ~ 50°C (-40°F ~ 122°F)
Operating humidity	10% ~ 85% RH
Protection class	IP67
Approvals	CE ,FCC , IP67, IK10 (metal casing)



**d. Installation site security camera; its function to secure the installed equipment at the installation site**

<b>Image System</b>	
Image pickup device	1/2.5" Progressive Scan CMOS 4MP
<b>Electric</b>	
Minimum illumination	Color: 1.63 lux at F2.8 (30 IRE, 2400°K); B/W: 0.06 lux at F2.8 (30 IRE, 2400°K)
Mechanical IR Cut Filter	Yes
Built-in Lens	Fisheye lens, 1.05 mm / F2.8
Day/Night mode	Auto / manual
Horizontal Viewing Angle	180°
Focal Length / Aperture	Fisheye lens, 1.05 mm / F2.8
White balance	ATW1 / Manual
Electric shutter	1/5 ~ 1/2,000 sec (manual mode); 1/5 ~ 1/10,000 sec (auto mode)
Image Enhancement	Advanced WDR, White balance: automatic, hold and manual; Brightness; Saturation; Contrast; Edge enhancement; Automatic gain control; 2D+3D Digital noise reduction; Flickerless; Defogging
Multi-Streaming	Simultaneous dual streams
Video Resolution and frame rate	6 fps at 2032 x 1920; 12 fps at 1920 x 1080; 12 fps at 1280 x 720; 12 fps at 640 x 480
Modes	Fisheye View; Dewarped View: 180° / 360° Panorama, ePTZ, 6 VGA, Motion Detection Preset
<b>Network</b>	
Ethernet Port	1, Ethernet (10/100 Base-T), RJ-45 connector
<b>Power Specs</b>	
Power Source	PoE Class 3 (IEEE 802.3af) and DC 12V
Application	Ceiling mount/Pole mount
<b>Environmental</b>	
Operating temperature	-40 °C ~ 50°C (-40°F ~ 122°F)
Operating humidity	10% ~ 85% RH
Protection class	IP66



## 5.1 IR System (High Power IR Illuminator)

IR System Specs
<ul style="list-style-type: none"><li>• Wave length 850nm</li><li>• Adjustable photocell</li><li>• Adjustable power output for IR</li><li>• Telemetry Control</li><li>• Temp Range: -20 to +50°C</li><li>• Coverage area ; as needed and distance upto 700m ( depends on installation site)</li><li>• Protection IP66</li><li>• Includes all required installation accessories</li></ul>

## 5.2 Solar power system

Solar System Specs
<ul style="list-style-type: none"><li>• Sourcing power to the site for 2 days without direct sun light.</li><li>• IP54 enclosure Galvanized and power coted</li><li>• Heavy duty gel Batteries deep cycle</li><li>• Remote power and battery monitoring</li><li>• Vandal proof enclosure and wiring</li><li>• Protection fence</li><li>• Inverter must be pure sine wave</li><li>• High Capacity PV Panels</li><li>• All calculation must base on ; 2 day to autonomy , panel generation factor 6, depth of discharge 50% (calculation justifications is a must)</li></ul>

## 5.3 Network connectivity

Network System Specs
<ul style="list-style-type: none"><li>• Wireless connection only is allowed, integration to the recent system is needed</li><li>• Connection bandwidth for each site minimum 6 Mbps</li><li>• All equipment including switches must be managed.</li><li>• Equipment type Outdoor</li><li>• Industrial grade</li><li>• Maintain harsh environment low temperature and high temperature.</li></ul>

## 5.4 Server and storage

Storage Specs
<ul style="list-style-type: none"><li>Storage<ul style="list-style-type: none"><li>Recording up to 24hours/60 days</li><li>have redundant power supply</li><li>Capable to expand up to 32 TB</li><li>Support RAID 0/1/5/5+1/6/10</li><li>Hot swap pays</li><li>Rack mount</li><li>4x gigabit ports</li></ul></li></ul>
Server Specs
<ul style="list-style-type: none"><li>Server specs must be verified by VMS vendor</li></ul>

## 5.5 Video management system

Architecture
<ul style="list-style-type: none"><li>Client / Server Architecture and Multi-Task.</li><li>Can be operated with analogue cameras simultaneously from IPs that are connected to the TCP / IP directly or through a Video Server.</li><li>Supports 64 cameras.</li><li>Allows two or more processors sharing the tasks of the software to increase performance.</li><li>Supports various models of IP cameras, video servers and DVRs.</li><li>Allows remote access, unlimited connections per server.</li><li>Allows viewing of cameras from different servers on the same screen.</li><li>You can use any image resolution (1280x1024 Just above), if the camera supports.</li><li>Has Streaming Multi system, which allows live monitoring of the recording with different configurations.</li><li>Allows storage and transmission of images in MJPEG and MPEG4, and H.264.</li><li>Allows simultaneous operations such as recording, playback and export video, system configuration, live monitoring, query events, image search server monitoring and various other tasks.</li><li>Supports server architecture Master / Slave</li><li>Compliance with the protocol of ONVIF cameras (video only).</li></ul>
Recording
<ul style="list-style-type: none"><li>Supports continuous recording, motion detection and event.</li><li>Supports speed recording and live viewing of up to 30 fps per rate fps).</li><li>Supports the recording of 64 cameras per server</li><li>Allows you to increase the recording frame rate on motion.</li><li>Allows recording redundant database, allowing the second server takes the controls in case of fall of the first (Fail-Over).</li></ul>

- Has broadcast and recording schedule by date and time.
- Motion sensor enables control of areas sensitive to motion.
- Has buffer pre and post alarm.
- Has management system and advanced automatic disk.
- Has a system digital certificate for authentication of recorded images.
- Has the recording system that has no limit of daily recordings

#### **User Control**

- Support for 16 user accounts.
- Support for adding users through Active Directory-Windows (AD)
- Support for Biometric authentication login
- It has strict control of rights and different password for each user or group.
- Have groups of users that lets you assign the same permission settings for all users belonging to this group
- It has controls such as locking and expiration date of user account.

#### **Logs**

- Has access to the server log.
- Has logging user actions.
- Has the system event log.

#### **Web Server and Web Client**

- Has built-in web server for access through Internet Explorer.
- Allows viewing of live images through ActiveX Client (Monitoring).
- Allows control of PTZ via Joystick Visual.
- Provides emergency local recording by web browser.
- Allows you to enable events through the synoptic map (On a lamp, a trigger siren, etc.).
- Provides information to configure the camera as image resolution, frames per second "FPS", and Baud Rate Decoder.
- Allows viewing and activation of Motion Detection live via the Web browser.
- Allows viewing of cameras via web browser using previously created mosaics.

#### **Video Monitoring and Playback**

- Allows you to search for images by camera, by date and time to export video with configurable rate in normal or reverse direction, by the time bar, allowing to select a video track.
- Has the timeline of recorded images which show the points where there are recordings and / or movement, and allows the selection of time through the timeline.
- Allows playback and export from multiple cameras simultaneously and synchronized in predefined tiles.
- Allows full operation via the Virtual Matrix through a list of monitors defined for this purpose, the operator can choose the monitor you want and send unlimited sequence of images, maps and mosaics, operated by joystick, keyboard and mouse.
- Supports up to four monitors per workstation.
- Search Advanced motion detection.
- Provides privacy masking tool for fixed cameras.
- Allows quick access to cameras via pre-configured shortcuts.
- Allows the frame rate is increased in the selection of the camera.
- It supports DirectX for better quality live video.
- Digital Zoom Allows live and recorded images from different areas of the screen
- Has automated mosaic, adjusting the aspect ratio automatically depending on the number of cameras.
- Allows creation of new styles of screen (1,4,9,16,32,64 Mosaics etc.)..

- Has control of image filters (blur, gaussian blur, sharpen, emboss, flip, flop, grayscale, invert) and tone image (red, green, blue, contrast, brightness and color level) for live monitoring and video playback on camera with default settings.
- Export videos into AVI format
- Allows you to save a JPG image in the video playback.
- Allows live monitoring of cameras per client and unlimited with various types of screen.
- Has synoptic map for live monitoring of devices such as cameras, sensors, relays

#### **Administration**

- Includes tool for locating camera and video-servers via the UPnP protocol.
- Has calculator for sizing disk space.
- Allows you to apply global settings in a set of cameras and users.
- Allows real-time configuration of the system.
- It has tools for monitoring server performance through historical chart.
- Has a privacy mask feature for fixed cameras.
- Work with the licensing system with cameras, allowing the expansion of the system with additional licenses.
- Supports the following operating systems: Windows XP, Windows Vista, Windows Server 2003, 7

#### **USB joysticks for PTZ control**

**The Software should support Edge storage technology**

## 5.6 Edge storage / SD card

**Well-known brand name micro SD card with capacity 64 GB**

## 5.7 system failover scenario

#### **failover Server Specs**

- Server specs must be verified by VMS vendor
- failover scenario should be in details

## 5.8 server cabinet

- server rack cabinet 42u

## 5.9 UPS

- online Uninterrupted Power Supply
- management
- works for Four hours at least

## 6.0 TERMS & CONDITIONS

- a. The offers should cover the technical specifications which achieve PDTRA goals.
- b. All equipment should be well-known Brand Name.
- c. The bidding company has the right to pay a visit to the target site after having the formal RFP, run survey & proper study in cooperation with PDTRA-IT staff; any proposed excellent technical solution may be accepted.
- d. financial offer MUST be clear & in details, so that price of equipment is separated and detailed .
- e. The bidder must be certified for the trademark which they offer.
- f. Solar panel calculation & design should be attached.
- g. Calculation of recording duration based on storage capacity (Full HD, HD, etc..)
- h. The bidder should be responsible for Installation, integration and running the system, and provide any required components.
- i. The bidder should be responsible for the compatibility of all of the system components.
- j. If wireless devices to be used, the bidder is responsible for providing advanced approvals from the Telecommunications Regulatory Commission (TRC) or any licenses or fees.
- k. When civil works (excavations) are needed, please note that all of them will be under the supervision of an Archaeological employee from PDTRA.
- l. PDTRA has the right to change the place of the cameras when it is not suitable, so the contractor should accept this.
- m. Final Colors of equipment devices & cameras must be compatible and suitable with PETRA-red rocked city (rosy natural color) , so that no odd vision observed .this work will be followed up and supervised by PDTRA Archaeological employee and the supervised engineer .
- n. station at ( Khobtha خبثى ) site should be covered and protected by well-designed fence .

## **7.0 maintenance & IT support**

Maintenance and technical part \ the offer should include an agreement to provide a three years technical support, hardware & software maintenance when needed on site.

## **8.0 training**

- Offers should include a session of training for PDTRA\IT specialists on how the The solution & the connections work, this training should be for four hours within three days.
- Offers should include a training course for three of PDTRA\IT specialists achieving the followings:
  - The training course should be for a max period 20 hours.
  - The training course should be in wireless technology topics. Or CCTV cameras topics.
  - The training course should include attendance certificate.

## **9.0 Warranty**

Equipment, hardware & devices should have a warranty for at least three years.

## **10.0 Evaluation criteria**

The evaluation of the successful proposal shall be based on the highest level of receptiveness to the PDTRA's requirements and shall not be solely restricted to the lowest cost proposed.

A proposal to be considered unsuitable shall be rejected if it does not respond to important aspects of the Terms of Reference or if it fails to achieve the minimum technical score indicated in the Data Sheet.

The evaluation of the proposals received will be based on a combination of the technical proposal evaluation, the financial proposal evaluation, and the time frame to conclude the assignment. The criteria of the evaluation will comprise these key elements with a total of 100 points, which is divided into several evaluation segments. A proposal which obtains less than 75/100 in the technical proposal will disqualify and therefore not be evaluated financially.

### **10.1 Evaluation of Technical Proposals (70 points)**

- The technical proposal will be rated according to the following criteria:
- Qualifications and competence of personnel ;
- Adequacy of approach and methodology ;
- Responsiveness to the Project requirements ;
- Profile of the bidding firm and relevant experience ;
- The total time frame for implementing the complete project (maximum permissible duration is 3 months)

### **10.2 Evaluation of Financial Proposals (30 points)**

If the technical proposal achieves the minimum of (75 % \* 70), the financial evaluation will be taken into account in accordance to these guidelines:

The total amount of points for the cost component is 30. The maximum number of points shall be allotted to the lowest fees proposed by the qualified bidders the points for the other proposals are computed by dividing the lowest proposal by each subsequent proposal, and multiplying the result by the total points allocated

## نموذج كتاب عرض المناقصة Letter of Tender

المشروع : ..... العطاء رقم : .....

إلى السادة (صاحب العمل) : .....  
لقد قمنا بزيارة الموقع والتعرف على الظروف المحيطة به، كما قمنا بدراسة شروط العقد، والمواصفات، والمخططات، وجداول الكميات، وملحق عرض المناقصة، وجداول الأخرى، وملحق العطاء ذات الأرقام:..... المتعلقة بتنفيذ أشغال المشروع المذكور أعلاه. ونعرض نحن الموقعين أدناه أن نقوم بتنفيذ الأشغال وإنجازها وتسليمها وإصلاح أية عيوب فيها وفقا لهذا العرض الذي يشمل كل هذه الوثائق المدرجة أعلاه مقابل مبلغ إجمالي وقدره:..... أو أي مبلغ آخر يصبح مستحقا لنا بموجب شروط العقد.

إننا نقبل تعيين "مجلس فض الخلافات" بموجب "الفصل العشرين" من شروط العقد وسوف نقوم بالاتفاق على تعيين أعضائه حسب ملحق عرض المناقصة.

نوافق على الالتزام بعرض المناقصة هذا لمدة (٩٠) يوما من تاريخ إيداع العروض، وأن يبقى العرض ملزما لنا، ويمكنكم قبوله في أي وقت قبل انقضاء مدة الالتزام هذه. كما نقر بأن ملحق عرض المناقصة يشكل جزءا لا يتجزأ من "كتاب عرض المناقصة".

نتعهد في حالة قبول عرضنا، أن نقدم ضمان الأداء المطلوب بموجب المادة (٢/٤) من شروط العقد، وأن نياشر العمل بتاريخ أمر المباشرة، وأن ننجز الأشغال ونسلمها ونصلح أية عيوب فيها وفقا لمتطلبات وثائق العقد خلال "مدة الإنجاز".

وما لم يتم إعداد وتوقيع اتفاقية العقد فيما بيننا، وإلى أن يتم ذلك، فإن "كتاب عرض المناقصة" هذا مع "كتاب القبول أو قرار الإحالة" الذي تصدرونه يعتبر عقدا ملزما فيما بيننا .  
ونعلم كذلك بأنكم غير ملزمين بقبول أقل العروض قيمة أو أي من العروض التي تقدم إليكم.

حرر هذا العرض في اليوم: ..... من شهر: ..... عام: .....  
توقيع المناقص: ..... شاهد: .....



## ملحق عرض المناقصة

المشروع: شراء وتوريد وتركيب وتشغيل كاميرات مراقبه للمحمية الاثرية العطاء رقم: لوازم ٢٠١٤/٨

البيان	رقم المادة	
اسم صاحب العمل: عنوانه:	٢/٢/١/١ و ٣/١	سلطة اقليم البترا التنموي السياحي البترا - الاردن ص ب ( ٢٨ )
اسم المهندس : عنوانه:	٤/٢/١/١	
اسم المقاول: عنوانه:	٣/٢/١/١ و ٣/١	
كفالة المناقصة	التعليمات	( ٥ % ) من قيمة دخول العطاء
كفالة اصلاح العيوب	التعليمات	( ٥ % ) من قيمة العقد
مدة الإنجاز للأشغال	٣/٣/١/١	(٩٠) يوما تقويميا من تاريخ أمر المباشرة
فترة الإشعار بإصلاح العيوب	٧/٣/١/١	( ٣ ) سنوات تقويميا
القانون الذي يحكم العقد	٤/١	القوانين الأردنية السارية المفعول
اللغة المعتمدة في العقد	٤/١	اللغة العربية
لغة الاتصال	٤/١	اللغة العربية
المدة التي سيمنح فيها المقاول حق الدخول إلى الموقع	١/٢	(٧) أيام تقويمية من تاريخ أمر المباشرة .
قيمة ضمان الأداء قيمة ضمان الأداء خلال فترة الإشعار بإصلاح العيوب (ضمان اصلاح العيوب)	٢/٤	(١٠% ) من "قيمة العقد المقبولة" (- % ) من قيمة العقد
نظام توكيد الجودة	٩/٤	مطلوب
أوقات العمل المعتادة	٥/٦	
الفترة المحددة لمباشرة العمل بعد التاريخ المحدد للمباشرة	١/٨	(١٥) يوما، وتعتبر هذه الفترة مشمولة ضمن مدة الإنجاز
قيمة تعويضات التأخير	٧/٨	( 100 ) دينار عن كل يوم تأخير
الجهة التي تعين أعضاء مجلس فضّ الخلافات	٣/٢٠	جمعية المحكمين الأردنيين

## نموذج كفالة المناقصة Form of Tender Guarantee

المشروع: ..... العطاء رقم: .....

إلى السادة (صاحب العمل): ..... لقد تم  
إعلامنا أن المناقص: شركة: ..... سيتقدم بعرض  
للمناقصة للمشروع المنوه عنه أعلاه استجابة لدعوة العطاء، ولما كانت شروط العطاء تنص على أن يتقدم المناقص  
بكفالة مناقصة مع عرضه، وبناء على طلبه، فإن مصرفنا:  
بنك ..... يكفل بتعهد لا رجعة عنه أن يدفع لكم مبلغ:  
عند ورود أول طلب خطي منكم وبحيث يتضمن الطلب ما  
يلي:

- أ - أن المناقص، بدون موافقة منكم، قام بسحب عرضه بعد انقضاء آخر موعد لتقديم العروض أو قبل انقضاء  
صلاحية العرض المحددة بـ(٩٠) يوماً، أو  
ب- أنكم قد قمتم بإحالة العطاء عليه، ولكنه أخفق في إبرام اتفاقية العقد بموجب المادة (٦/١) من شروط العقد،  
أو  
ج- أنكم قد قمتم بإحالة العطاء عليه ، ولكنه أخفق في تقديم ضمان الأداء بموجب المادة (٢/٤) من شروط  
العقد.

وعلى أن يصلنا الطلب قبل انقضاء مدة صلاحية الكفالة البالغة (٩٠) يوماً ويتعين إعادتها إلينا، كما أن هذه الكفالة  
تحكمها القوانين المعمول بها في الأردن.

توقيع الكفيل / البنك: .....

المفوض بالتوقيع: .....

التاريخ: .....

## نموذج اتفاقية العقد

### Form of Contract Agreement

المشروع : شراء وتوريد وتركيب وتشغيل كاميرات مراقبه للمحميه الاثريه العطاء رقم: لوازم/٨/٢٠١٤

حررت هذه الاتفاقية في هذا اليوم ..... من شهر ..... لسنة ٢٠١٥..

بين

صاحب العمل .....سلطة إقليم البترا التنموي السياحي .. على اعتباره "الفريق الأول"

و

المقاول ..... على اعتباره "الفريق الثاني"

لما كان صاحب العمل راغبا في أن يقوم المقاول بتنفيذ أشغال مشروع: .....

.....

ولما كان قد قبل بعرض المناقصة الذي تقدم به المقاول لتنفيذ الأشغال وإنجازها وإصلاح أية عيوب فيها وتسليمها وفقا لشروط العقد،

فقد تم الاتفاق بين الفريقين على ما يلي:

- ١ - يكون للكلمات والتعابير الواردة في هذه الاتفاقية نفس المعاني المحددة لها في شروط العقد المشار إليها فيما بعد.
- ٢ - تعتبر الوثائق المدرجة تاليا جزءا لا يتجزأ من هذه الاتفاقية وتتم قراءتها وتفسيرها بهذه الصورة:
  - أ - "كتاب القبول" .....
  - ب - "كتاب عرض المناقصة" .....
  - ج - ملاحق المناقصة ذات الأرقام: .....
  - د - شروط العقد (الخاصة والعامة)
  - هـ - المواصفات وكما هو وارد في نموذج استدرج العروض المرفق بطيه .

٣ - "قيمة العقد المقبولة" ( )

"مدة الإنجاز" ( ٩٠ ) تسعون يوما تقويميا

٤ - إزاء قيام صاحب العمل بدفع الدفعات المستحقة للمقاول وفقا للشروط، يتعهد المقاول بتنفيذ الأشغال وإنجازها وإصلاح أية عيوب فيها وتسليمها وفقا لأحكام العقد.

٥ - إزاء قيام المقاول بتنفيذ الأشغال وإنجازها وإصلاح أية عيوب فيها وتسليمها، يتعهد صاحب العمل بأن يدفع إلى المقاول قيمة العقد بموجب أحكام العقد في المواعيد وبالأسلوب المحدد في العقد.

وبناء على ما تقدم فقد اتفق الفريقان على إبرام هذه الاتفاقية وتوقيعها في الموعد المحدد أعلاه وذلك وفقا للقوانين المعمول بها.

الفريق الأول (صاحب العمل)

الفريق الثاني (المقاول)

التوقيع: .....

الاسم: .....

الوظيفة: رئيس مجلس المفوضين

وقد شهد على ذلك: .....

## نموذج كفالة المناقصة Form of Tender Guarantee

المشروع: ..... العطاء رقم: .....

إلى السادة (صاحب العمل): ..... لقد تم  
إعلامنا أن المناقص: شركة: ..... سيتقدم بعرض  
للمناقصة للمشروع المنوه عنه أعلاه استجابة لدعوة العطاء، ولما كانت شروط العطاء تنص على أن يتقدم المناقص  
بكفالة مناقصة مع عرضه، وبناء على طلبه، فإن مصرفنا:  
بنك ..... يكفل بتعهد لا رجعة عنه أن يدفع لكم مبلغ:  
..... عند ورود أول طلب خطي منكم وبحيث يتضمن الطلب ما  
يلي:

- أ - أن المناقص، بدون موافقة منكم، قام بسحب عرضه بعد انقضاء آخر موعد لتقديم العروض أو قبل انقضاء  
صلاحية العرض المحددة بـ (٩٠) يوماً، أو  
ب- أنكم قد قمتم بإحالة العطاء عليه، ولكنه أخفق في إبرام اتفاقية العقد بموجب المادة (٦/١) من شروط العقد،  
أو  
ج- أنكم قد قمتم بإحالة العطاء عليه، ولكنه أخفق في تقديم ضمان الأداء بموجب المادة (٢/٤) من شروط  
العقد.

وعلى أن يصلنا الطلب قبل انقضاء مدة صلاحية الكفالة البالغة (٩٠) يوماً ويتعين إعادتها إلينا، كما أن هذه الكفالة  
تحكمها القوانين المعمول بها في الأردن.

توقيع الكفيل / البنك: .....  
المفوض بالتوقيع: .....

التاريخ: .....

نموذج ضمان الأداء (كفالة حسن التنفيذ)  
Performance Guarantee

إلى السادة: ..... يسرنا  
إعلامكم بأن مصرفنا: ..... قد كفل بكفالة  
مالية، المقاول: .....  
.....

بخصوص العطاء رقم ( / )  
المتعلق بمشروع: ..... بمبلغ: ( )  
دينار أردني .....  
وذلك لضمان تنفيذ العطاء  
المحال عليه حسب الشروط الواردة في وثائق عقد المقاول، وأنا نتعهد بأن  
ندفع لكم - بمجرد ورود أول طلب خطي منكم المبلغ المذكور أو أي جزء تطلبونه منه بدون أي تحفظ أو شرط - مع  
ذكر الأسباب الداعية لهذا الطلب بأن المقاول قد رفض أو أخفق في تنفيذ أي من التزاماته  
بموجب العقد - وذلك بصرف النظر عن أي اعتراض أو مفاضة من جانب المقاول على إجراء الدفع.  
وتبقى هذه الكفالة سارية المفعول من تاريخ إصدارها ولحين تسلم الأشغال المنجزة بموجب العقد المحدد مبدئياً بتاريخ  
..... شهر ..... من عام ..... ما لم يتم تمديدتها أو تجديدها بناء على  
طلب صاحب العمل.

توقيع الكفيل / مصرف: .....

المفوض بالتوقيع: .....

التاريخ: .....