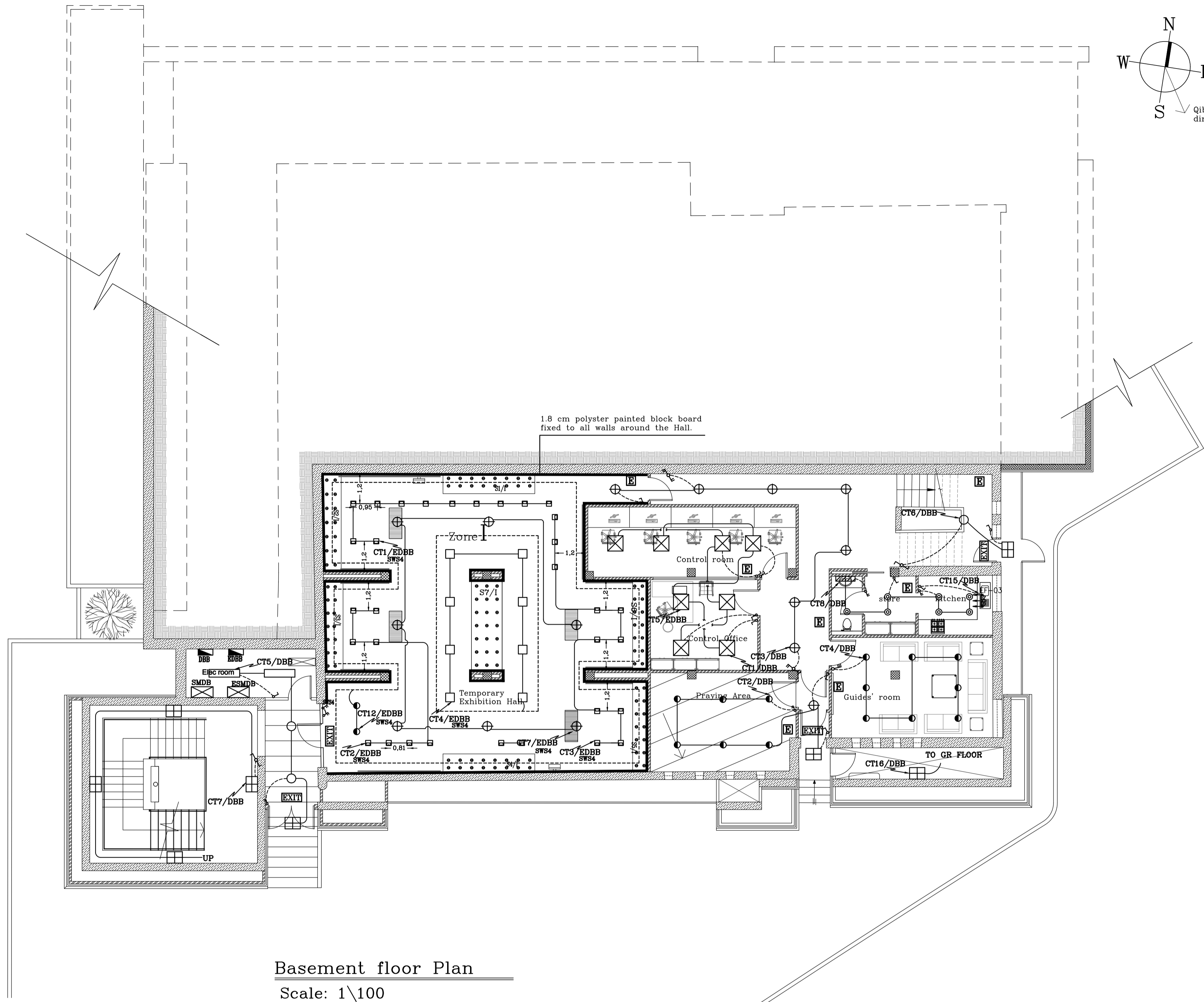


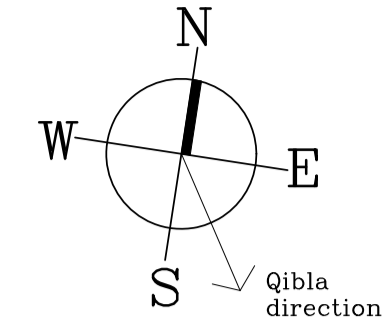
Ground floor Plan

Scale: 1\100



Basement floor Plan

Scale: 1\100



- NOTES:**
- 1- EMERGENCY LIGHTING FIXTURES SHALL BE CONNECTED TO SEPARATE CIRCUITS CT14/EDBG
  - 2- SPOT LIGHTS FOR SHOWCASES NO : \* S1/F, S2/F & S3/F SHALL BE CONNECTED TO WALL MOUNTED SOCKET OUTLETS CONNECTED TO (CT25/EDBG) TO BE CONTROLLED BY IGANG SWITCH IN GRID SWITCH SWS1
  - \* S2/D,S3/D,S4/D SHALL BE CONNECTED TO WALL MOUNTED SOCKET OUTLETS CONNECTED TO (CT15/EDBG) TO BE CONTROLLED BY IGANG SWITCH IN GRID SWITCH SWS1
  - \* S1/D,S4/D SHALL BE CONNECTED TO WALL MOUNTED SOCKET OUTLETS CONNECTED TO (CT16/EDBG) TO BE CONTROLLED BY IGANG SWITCH IN GRID SWITCH SWS1
  - \* S2/C,S3/C SHALL BE CONNECTED TO WALL MOUNTED SOCKET OUTLETS CONNECTED TO (CT17/EDBG) TO BE CONTROLLED BY IGANG SWITCH IN GRID SWITCH SWS1
  - \* S1/C,S4/C SHALL BE CONNECTED TO WALL MOUNTED SOCKET OUTLETS CONNECTED TO (CT18/EDBG) TO BE CONTROLLED BY IGANG SWITCH IN GRID SWITCH SWS1
  - \* S1/B,S4/B SHALL BE CONNECTED TO WALL MOUNTED SOCKET OUTLETS CONNECTED TO (CT19/EDBG) TO BE CONTROLLED BY IGANG SWITCH IN GRID SWITCH SWS2
  - \* S2/B,S3/B SHALL BE CONNECTED TO WALL MOUNTED SOCKET OUTLETS CONNECTED TO (CT20/EDBG) TO BE CONTROLLED BY IGANG SWITCH IN GRID SWITCH SWS2
  - \* S1/E,S2/E,S3/E,S4/E SHALL BE CONNECTED TO WALL MOUNTED SOCKET OUTLETS CONNECTED TO (CT21/EDBG) TO BE CONTROLLED BY IGANG SWITCH IN GRID SWITCH SWS2
  - \* S2/S,S3/S,S4/S SHALL BE CONNECTED TO WALL MOUNTED SOCKET OUTLETS CONNECTED TO (CT22/EDBG) TO BE CONTROLLED BY IGANG SWITCH IN GRID SWITCH SWS3
  - 3-LED SPOT LIGHTS SHALL BE COMPLETED WITH DRIVER WHERE NECESSARY

LEGEND:-					
TYPE A	RECESSED SQUARE LENS WALLWASHER WITH 13W LED LAMP, RECESSED IN FALSE CEILING . 870Lm 3000K WARM WHITE 0°-90°TILT , COMPLETE WITH ELECTRONIC BALLAST . AS TO ERCO-LOGOTEC LENS WALLWASHER 81289000 RECESSED OR EQUAL APPROVED.	TYPE H	2x26W ENERGY SAVING COMPACT FLUORESCENT RECESSED SPOT LIGHT,AND WITH ELECTONIC BALLAST (IP 20)	TYPE R	2x18W ENERGY SAVING RECESSED IN FALSE SPOT LIGHT WITH ELECTONIC BALLAST (IP 44)
TYPE AA	SPOT LIGHT WITH 5W LED LAMP RECESSED IN FALSE CEILING NARROW BEAM, 290Lm , 3000K,WARM WHITE 0°-90° TILT ,COMPLETE WITH ELECTRONIC BALLAST AS TO ERCO-LOGOTEC RECESSED SPOT LIGHT 81293000 . OR EQUAL APPROVED.	TYPE HA	2x26W ENERGY SAVING RECESSED SPOT LIGHT (IP 20),AND WITH ELECTONIC DIMMABLE BALLAST	TYPE S	22x4W COMPACT FLUORESCENT NOT INTEGRATED LAMP SQUARE CEILING SURFACE MOUNTED LIGHTING FIXTURE WITH 2G7 SOCKET AND ELECTRONIC BALLAST,WITH ANODIZED EXTRUDED ALUMINIUM BODY AND OPAL DIFFUSER .(IP40) . AS TO NOVALUX - ANNA E013P2024A0 OR EQUAL APPROVED.
TYPE B	2x36W FLUORESCENT LIGHTING FIXTURE SURFACE MOUNTED, WITH PRISMATIC DIFFUSER & ELECTRONIC BALLAST-IP40	TYPE K	1x36W T5 FLUORESCENT WARM WHITE LIGHTING FIXTURE (BATTEN TYPE) WITHOUT REFLECTOR AND WITH ELECTRONIC BALLAST, MOUNTED ABOVE STRETCH CEILING .	TYPE SA	1x22W FLUORESCENT CIRCULAR LAMP ROUND CEILING MOUNTED LIGHTING FIXTURE WITH ANODIZED EXTRUDED ALUMINIUM BODY AND OPAL DIFFUSER .(IP40) . AS TO NOVALUX - ANNA E013P1022A0 OR EQUAL APPROVED
TYPE C	PROJECTOR WITH 9W LED LAMP ,30° LED BEAM ANGLE, 3200K,12V COMPLETE WITH DRIVER , IP67, MOUNTED IN SHOWCASES AS TO OFE LED-LIATOR 2412 OR EQUAL APPROVED.	TYPE KA	1x14W T5 FLUORESCENT LIGHTING FIXTURE (BATTEN TYPE) WITHOUT REFLECTOR AND WITH ELECTRONIC BALLAST, MOUNTED ABOVE STRETCH CEILING .	TYPE L	SPOT LIGHT WITH 7W LED ADJUSTABLE LAMP RECESSED IN FALSE CEILING 12V COMPLETE WITH DRIVER, (IP 20) . AS TO TARGTHI - LINK LED 172665 OR EQUAL APPROVED.
TYPE D	SPOT LIGHT WITH 5W LED ADJUSTABLE LAMP RECESSED IN CEILING OF SHOWCASES 30° LED BEAM ANGLE,3200K,12V,COMPLETE WITH DRIVER, (IP 20), AS TO TARGTHI - LINK LED 172662 OR EQUAL APPROVED.	TYPE N	1x15W FLUORESCENT LIGHTING FIXTURE WITH OPAL DIFFUSER ABOVE MIRROR (IP42)	TYPE M	2x6W EMERGENCY LIGHTING FIXTURE WITH POLYCARBONATE DIFFUSER 3 HOURS DURATION (NON-MAINTAINED)
TYPE DA	MONOLED SPOT LIGHT WITH 1.5W LED LAMP RECESSED IN SHELVES OF SHOWCASES , DIE CAST ALUMINIUM FINNED BODY,WITH ALUMINIUM OPTICS FOR A CONTROLLED BEAM, 3200K ,12V COMPLETE WITH DRIVER .(IP 20) AS TO TARGTHI - MONOLED 171845 OR EQUAL APPROVED.	TYPE O	1x16W COMPACT FLUORESCENT BULK HEAD FIXTURE WITH POLYCARBONATE DIFFUSER (IP55)	EXIT	3W LED LAMP EMERGENCY FIXTURE WITH EXIT SIGN (MAINTAINED), COMPLETE WITH DRIVER
TYPE G	(60x60) FLUORESCENT LIGHTING FIXTURE RECESSED IN FALSE CEILING WITH MIRROR DOUBLE PARABOLIC LOUVER EQUIPED WITH 4x14W T5 LAMP AND ELECTONIC BALLAST (IP20).	TYPE P	1x26W CIRCULAR CEILING SURFACE MOUNTED COMPACT FLUORESCENT LIGHTING FIXTURE,WITH OPAL DIFFUSER IP44		
TYPE F	6.8W/M, 70 LED/METER LINEAR LIGHTING FIXTURE				
TYPE FA	14.4W/M, 60 LED/METER LED STRIP LIGHTING FIXTURE 3500K,12V IP20				

OWNER:  
Petra Development Tourism Region Authority

CONSULTANT:  
BITAR CONSULTANTS  
Architects Engineers & Project Managers



PROJECT NAME:  
Petra Visitor Center  
Interior Works  
Phase 2

Date	Design Tender No.		
May 2012			
Project No.	Drawing Title		
1076	Basement & Ground Floor Lighting System		
Sheet No.	E101		
Size	Scale	Designed	Drawn
A1	1/100	Ameera Dandis	Mazen Bitar
	File ID	21852	21852
		21852	21852