

# CARE FOR PETRA

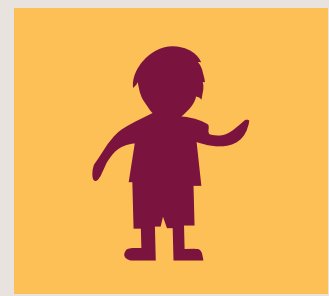


CHILDREN, ANIMALS, HERITAGE

## THINK BEFORE YOU



# ACT



# BUY OR



# RIDE



12-year-old postcard seller Aminah shouldn't be here.

She should be in school.



None of Petra's ancient pieces should be sold or taken from the monument.



John should've thought about his size and the animal's welfare before taking a ride.

## MAKE THE RIGHT CHOICES



Take as many pictures as you like, but leave the monuments behind for future visitors.



Instead of giving money, help children, animals and their communities by only buying from local licensed shops.



Thank you for walking whenever you can.

Help protect Petra's heritage, stop child labor and ensure animal welfare

The Care for Petra campaign was developed with the support of Bait Al Anbat, the Brooke, the International Labour Organization, the Jordan Inbound Tour Operators Association, the Jordan Tourism Board, the Jordan Tour Guides Association, the Petra National Trust, Save the Children, SPANA-Jordan, UNESCO Amman and the USAID Economic Growth Through Sustainable Tourism Project.



## Petra

Petra Development & Tourism Region Authority  
سلطة إقليم البتراء للتنموي السياحي

Contact information: Petra Archeological Park  
f /PetraVisit @VisitPetra  
Email: info@visitpetra.jo  
Call Center: +962-79-9291991  
Visitor Center: +962-3-215 6044  
Tourist Police: +962-7-548 4671  
Civil Defense: 911



None of Petra's ancient pieces should be sold or taken from the monument.

**MAKE  
THE  
RIGHT  
CHOICES**

Take as many pictures as you like, but leave the monuments behind for future visitors.



**Petra**

Petra Development & Tourism Region Authority  
سلطة إقليم البتراء للتنموي السياحي

Help protect Petra's heritage, stop child labor and ensure animal welfare

The Care for Petra campaign was developed with the support of Bait Al Anbat, the Brooke, the International Labour Organization, the Jordan Inbound Tour Operators Association, the Jordan Tourism Board, the Jordan Tour Guides Association, the Petra National Trust, Save the Children, SPANA-Jordan, UNESCO Amman and the USAID Economic Growth Through Sustainable Tourism Project.

Contact information: Petra Archeological Park  
f /PetraVisit @VisitPetra  
Email: info@visitpetra.jo  
Call Center: +962-79-9291991  
Visitor Center: +962-3-215 6044  
Tourist Police: +962-7-548 4671  
Civil Defense: 911

# CARE FOR PETRA



CHILDREN, ANIMALS, HERITAGE

## THINK BEFORE YOU BUY

12-year-old  
postcard seller  
Aminah shouldn't  
be here.

She should be  
in school.

**MAKE  
THE  
RIGHT  
CHOICES**

Instead of giving money, help children, animals  
and their communities by only buying from  
local licensed shops.



### Petra

Petra Development & Tourism Region Authority  
سلطة إقليم البترا للتنموي السياحي

Help protect Petra's heritage, stop child labor and ensure animal welfare

The Care for Petra campaign was developed with the support of Bait Al Anbat, the Brooke, the International Labour Organization, the Jordan Inbound Tour Operators Association, the Jordan Tourism Board, the Jordan Tour Guides Association, the Petra National Trust, Save the Children, SPANA-Jordan, UNESCO Amman and the USAID Economic Growth Through Sustainable Tourism Project.

Contact information: Petra Archeological Park  
f /PetraVisit @VisitPetra  
Email: info@visitpetra.jo  
Call Center: +962-79-9291991  
Visitor Center: +962-3-215 6044  
Tourist Police: +962-7-548 4671  
Civil Defense: 911



John should've thought about his size and the animal's welfare before taking a ride.

**MAKE  
THE  
RIGHT  
CHOICES**

Thank you for walking whenever you can.



**Petra**

Petra Development & Tourism Region Authority  
سلطة إقليم البترا للتنموي السياحي

Help protect Petra's heritage, stop child labor and ensure animal welfare

The Care for Petra campaign was developed with the support of Bait Al Anbat, the Brooke, the International Labour Organization, the Jordan Inbound Tour Operators Association, the Jordan Tourism Board, the Jordan Tour Guides Association, the Petra National Trust, Save the Children, SPANA-Jordan, UNESCO Amman and the USAID Economic Growth Through Sustainable Tourism Project.

Contact information: Petra Archeological Park  
f /PetraVisit @VisitPetra  
Email: info@visitpetra.jo  
Call Center: +962-79-9291991  
Visitor Center: +962-3-215 6044  
Tourist Police: +962-7-548 4671  
Civil Defense: 911