



Petra

Petra Development & Tourism Region Authority
سلطة إقليم البتراء للتنمية السياحي

PDTTRA

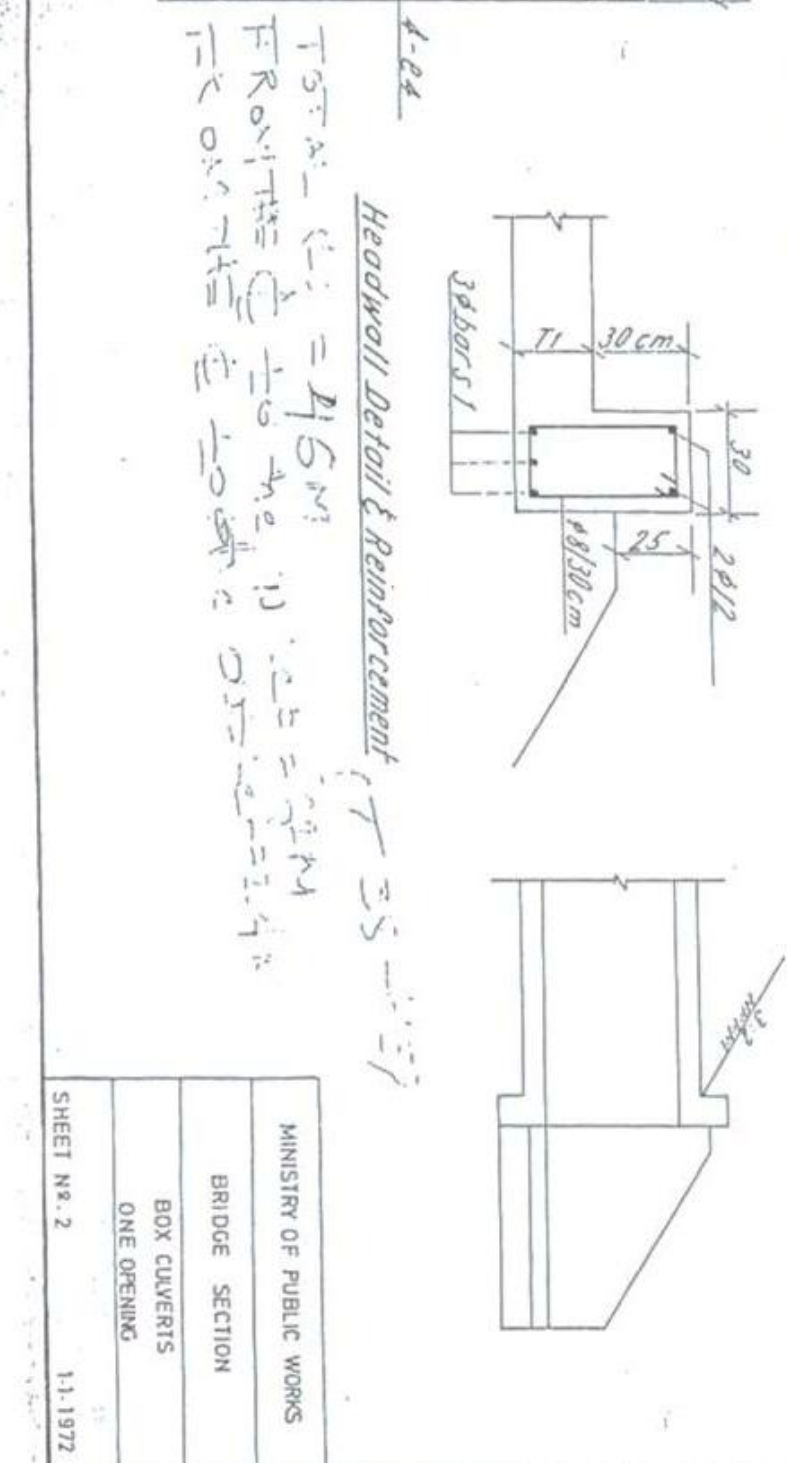
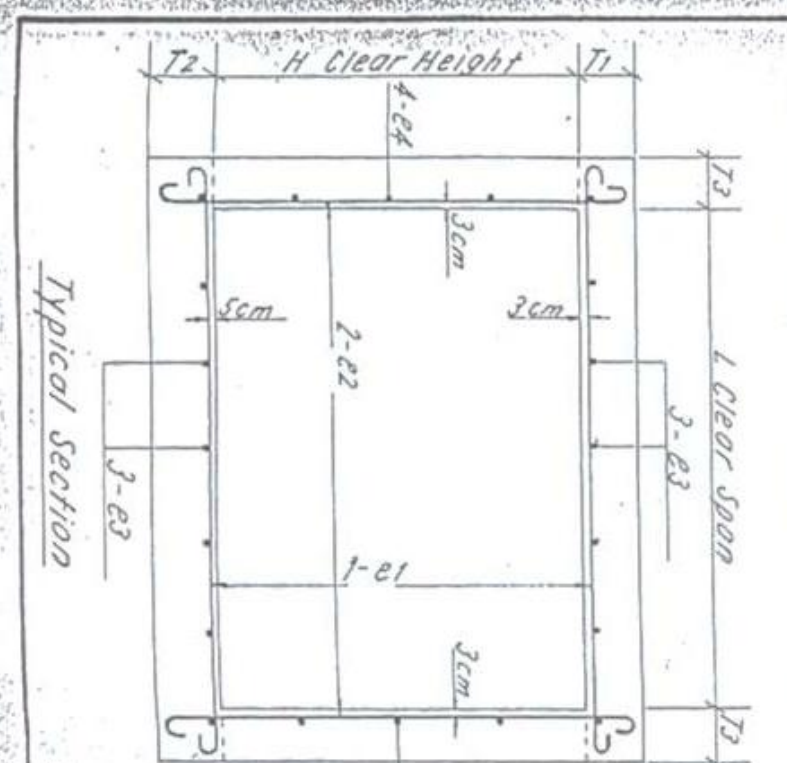
Petra Development & Tourism
Region Authority

Rehabilitation of street Baseet / Qarara

Drawing title:
Box culvert detail
Dimensions are:
IN (m)

Scale 1/100

Culvert	Clear Span L m	Height H m	Thicknesses			List of Reinforcing Steel												Quantities		Thicknesses			List of Reinforcing Steel												Quantities	
			Top Slab T1 cm	Botl. Slab T2 cm	Walls T3 cm	1		2		3		4		3x4		m ³	kg/m	Top Slab T1 cm	Botl. Slab T2 cm	Walls T3 cm	1		2		3		4		3x4		m ³	kg/m				
6.01m To 9.0m Fill																																				
1.0	2.4	2.6	22	22	22	18	153	1250	74	158	20	10	25	5	30	12	1.18	72.45	27	39	25	18	159	10	14	182	20	10	25	6	30	12	1.34	85.73		
1.5	2.4	28	23	23	23	18	155	1250	74	205	18	10	25	10	30	12	1.42	86.32	27	39	25	18	159	10	16	215	18	10	25	10	30	12	1.42	86.32		
1.0	3.3	35	23	23	23	18	208	11	14	114	20	14	25	6	30	12	1.79	118.20	38	40	35	18	212	10	14	184	30	17	20	6	30	12	1.79	118.20		
1.5	3.3	36	23	23	23	18	208	11	18	218	20	14	25	10	30	12	2.04	134.83	38	41	35	18	212	10	18	228	15	17	20	10	30	12	2.04	134.83		
2.0	3.3	36	26	26	26	18	234	11	18	281	18	14	25	14	30	12	2.43	174.55	38	41	29	18	230	10	18	291	15	17	20	14	30	12	2.43	174.55		
1.51m To 3.0m Fill																																				
1.0	2.8	28	22	22	22	16	252	11	12	160	20	18	25	6	30	12	1.85	109.88	35	36	24	18	260	10.5	14	177	25	18	25	6	30	12	2.24	139.13		
1.5	2.8	28	22	22	22	16	252	11	14	212	22	18	25	10	30	12	2.02	122.50	35	37	24	18	260	10.5	14	218	15	18	25	10	30	12	2.51	161.75		
2.0	2.8	30	24	24	24	16	257	11	14	264	22	18	25	14	30	12	2.40	152.92	35	38	26	18	268	10.5	14	230	14	18	25	18	30	12	3.08	215.41		
2.5	2.8	30	26	26	26	16	261	11	14	314	17	18	25	16	30	12	2.78	181.48	35	39	28	18	268	10.5	14	230	14	18	25	18	30	12	3.38	238.98		
1.0	3.2	34	28	28	28	18	314	12	14	312	25	22	25	10	30	12	2.51	161.81	42	43	26	22	319	12	16	245	18	30	18	10	30	12	3.78	239.22		
1.5	3.2	34	28	28	28	18	314	12	14	312	25	22	25	10	30	12	2.77	185.92	42	45	28	22	323	12	16	298	18	30	18	14	30	12	4.18	253.21		
2.0	3.2	34	28	28	28	18	314	12	14	312	25	22	25	16	30	12	3.17	205.92	42	48	29	22	325	12	22	335	19	30	18	20	25	12	4.65	285.84		
2.5	3.2	35	28	28	28	18	318	12	14	312	25	22	25	16	30	12	3.45	219.15	42	47	31	22	329	12	22	406	17	30	18	24	25	12	4.74	295.71		
1.0	3.8	40	26	26	26	18	364	9	14	184	25	32	20	6	30	12	3.27	214.92	50	51	30	22	371	10	14	258	19	42	15	16	30	12	4.57	301.75		
1.5	3.8	40	26	26	26	18	364	9	14	234	25	32	20	10	30	12	3.53	223.20	50	52	30	22	371	10	16	258	19	42	15	14	30	12	4.97	332.60		
2.0	3.8	40	31	31	31	18	374	9	14	284	20	32	20	14	30	12	4.10	261.98	50	52	31	22	379	10	18	312	18	42	15	14	30	12	4.97	332.60		
2.5	3.8	41	31	31	31	18	374	9	16	338	17	32	20	16	30	12	4.40	282.21	50	54	33	22	383	10	18	368	17	42	15	20	25	12	5.48	371.44		
3.0	3.8	41	31	31	31	18	374	9	18	391	15	32	20	20	30	12	4.72	318.18	50	55	35	22	387	10	22	422	16	42	15	24	25	12	5.99	448.75		



MINISTRY OF PUBLIC WORKS
BRIDGE SECTION
BOX CULVERTS
ONE OPENING
SHEET No. 2
1.1.1972