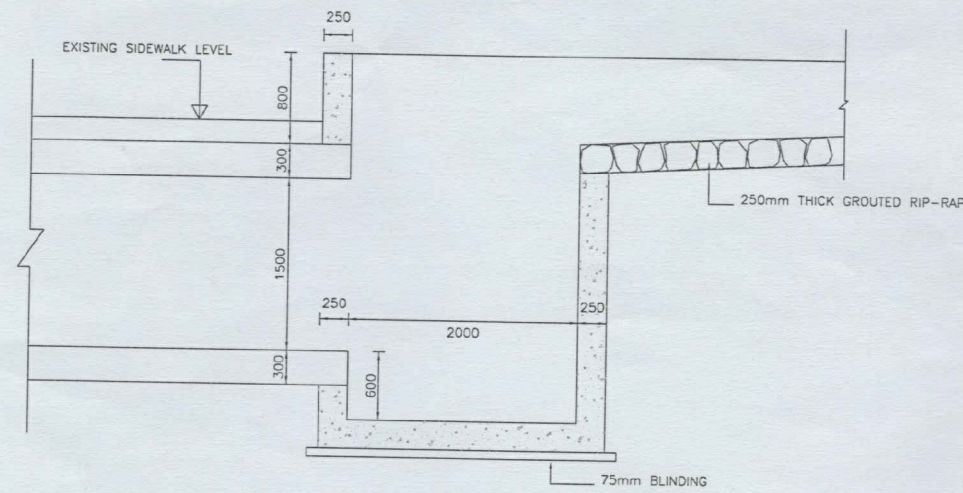
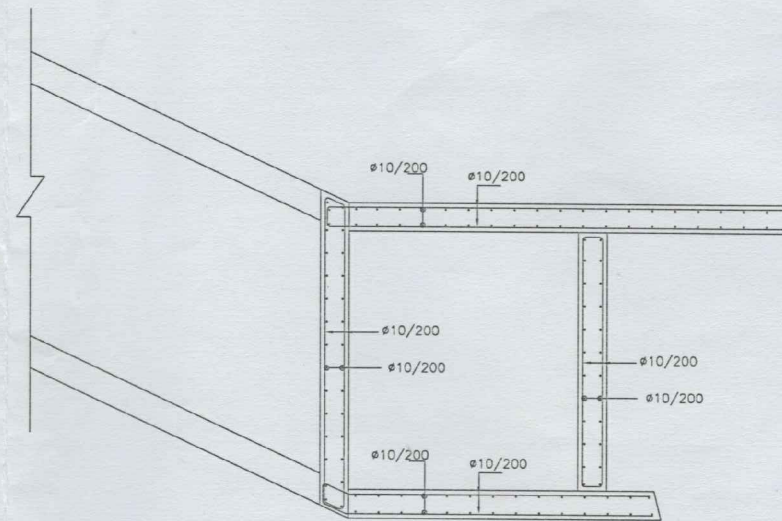


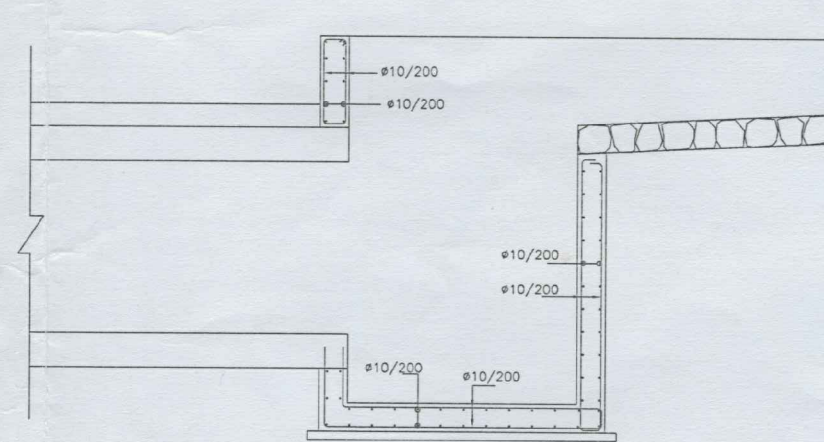
DROP INLET PLAN



DROP INLET SECTION



DROP INLET REINFORCEMENT PLAN




DROP INLET REINFORCEMENT SECTION

NOTES:

1. ALL DIMENSIONS ARE IN MILLIMETER.
2. ALL REINFORCED CONCRETE SHALL BE CLASS '25'
3. 7.5cm THICK CONCRETE BLINDING CLASS '15' TO BE PROVIDED UNDER ALL SLABS
4. REINFORCEMENT SHALL CONFORM TO ASTM A615, GRADE 60
5. ALL EXPOSED FORMED SURFACES SHALL BE FAIR-FACED CONCRETE



THE HASHEMITE KINGDOM OF JORDAN
MINISTRY OF PUBLIC WORKS & HOUSING

ASSOCIATED CONSULTING ENGINEERS - ACE 

دارق للشؤون والبريد في جنوب البتة

إنشاء جارة صندوقية في الطيبه - وادي موسى

DROP INLET DETAILS

DESIGNED	K.B.	DATE	SEP. 2014
CHECKED	K.B.	SCALE	1:30 ON A1
APPROVED	J.Y.	SHEET NO.	05