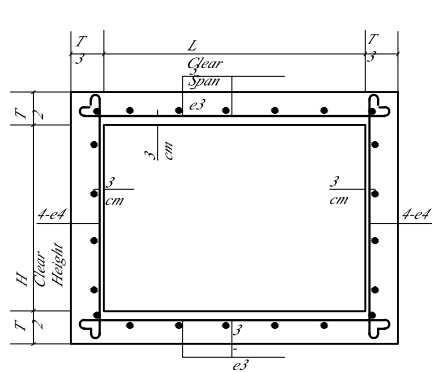
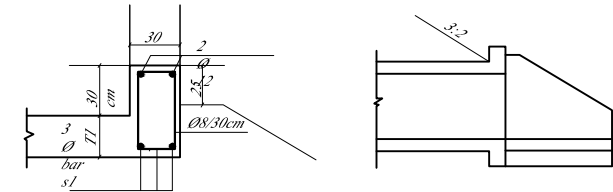


Culvert	Thicknesses					List											Quantities		Thicknesses					List											Quantities																														
	Clear Span	Height	Top Slab	Bottom Slab	7 Walls	1	2	3	4	3&4	Concrete	Reinf. Steel	Top Slab	Bottom Slab	7 Walls	1	2	3	4	3&4	Concrete	Reinf. Steel	Top Slab	Bottom Slab	7 Walls	1	2	3	4	3&4	Concrete	Reinf. Steel																																	
m	m	cm	cm	cm	mm	mm	mm	mm	mm	mm	m ²	kg	cm	cm	cm	mm	m	cm	mm	m	cm	mm	m	cm	mm	mm	mm	mm	mm	m ²	kg																																		
6.01 m to 9.0m Fill																																	9.01 m to 12.0m Fill																																
1.0	1.0	24	26	22	16	1.53	12.50	14	1.56	20	10	25	6	30	12	1.16	73.43	27	29	25	16	1.59	10	14	1.62	20	10	25	6	30	12	1.34	83.73																																
	1.5	24	26	23	16	1.55	12.50	14	2.06	18	10	25	10	30	12	1.42	86.32	27	29	25	16	1.59	10	16	2.15	16	10	25	10	30	12	1.42	86.32																																
1.5	1.0	33	35	23	18	2.08	11	14	1.74	20	14	25	6	30	12	1.79	116.20	38	40	25	18	2.12	10	14	1.84	20	17	20	6	30	12	1.79	116.11																																
	1.5	33	36	23	18	2.08	11	16	2.28	20	14	25	10	30	12	2.04	134.63	38	41	25	18	2.12	10	16	2.38	15	17	20	10	30	12	2.04	136.63																																
2.0	33	36	26	18	2.81	11	18	2.81	16	14	25	14	30	12	2.43	174.55	38	41	29	18	2.20	10	18	2.91	15	17	20	14	30	12	2.44	174.55																																	
1.51 m to 3.0m Fill																																	3.01 m to 6.0m Fill																																
2	1.0	28	28	22	16	2.53	11	12	1.60	20	18	25	6	30	12	1.85	109.85	35	36	24	18	2.60	10.5	14	1.77	25	18	25	6	30	12	2.24	139.13																																
	1.5	28	28	22	16	2.53	11	14	2.12	22	18	25	10	30	12	2.03	122.50	35	37	24	18	2.60	10.5	14	2.28	15	18	25	10	30	12	2.51	162.30																																
2.5	2.0	28	30	24	16	2.57	11	14	2.64	22	18	25	14	30	12	2.40	132.92	35	38	26	18	2.64	10.5	14	2.29	15	18	25	14	30	12	2.38	175.80																																
	2.5	28	30	26	16	2.61	11	14	3.14	17	18	25	16	30	12	2.76	151.48	35	39	28	18	2.68	10.5	14	3.30	14	18	25	16	30	12	3.20	190.91																																
3.0	1.0	32	34	26	18	3.14	12	14	1.72	25	22	25	6	30	12	2.51	147.81	42	43	26	22	3.19	12	14	1.91	20	30	18	6	30	12	3.08	215.47																																
	1.5	32	34	26	18	3.14	12	14	2.22	25	22	25	10	30	12	2.77	156.20	42	44	26	22	3.19	12	16	2.45	18	30	18	10	30	12	3.38	238.90																																
3.0	2.0	32	34	28	18	3.18	12	14	2.72	25	22	25	14	30	12	3.17	163.92	42	45	28	22	3.23	12	16	2.96	18	30	18	14	30	12	3.78	255.37																																
	2.5	32	35	28	18	3.18	12	14	3.23	14	22	25	16	30	12	3.45	197.15	42	46	29	22	3.25	12	22	3.55	19	30	18	20	25	12	4.16	279.33																																
3.0	3.0	32	35	28	18	3.18	12	16	3.26	14	22	25	20	30	12	3.73	238.73	42	47	31	22	3.29	12	22	4.06	17	30	18	24	25	12	4.65	355.88																																
	1.0	38	40	26	18	3.64	9	14	1.84	25	32	20	6	30	12	3.27	214.93	50	51	30	22	3.77	10	14	2.07	19	42	15	6	30	12	4.24	295.71																																
3.0	1.5	38	40	26	18	3.64	9	14	2.34	25	32	20	10	30	12	3.53	223.80	50	52	30	22	3.77	10	14	2.58	19	42	15	10	30	12	4.57	305.75																																
	2.0	38	40	31	18	3.74	9	14	2.84	20	32	20	14	30	12	4.10	242.90	50	53	31	22	3.79	10	16	3.12	18	42	15	14	30	12	4.97	332.40																																
3.0	2.5	38	41	31	18	3.74	9	16	3.38	17	32	20	16	30	12	4.40	272.21	50	54	32	22	3.83	10	18	3.66	17	42	15	20	25	12	5.46	371.44																																
	3.0	38	41	31	18	3.74	9	18	3.91	15	32	20	20	30	12	4.72	318.16	50	55	35	22	3.87	10	22	4.22	16	42	15	24	25	12	5.99	448.25																																



Typical Section



Headwall Detail & Reinforcement

Petra Development & Tourism Region Authority

Rehabilitation of street Baseet / Qarara

PROJECT TITLE: PIPE CULVERT

DATE	REVISION NO.	DRAWING NO.

S.A