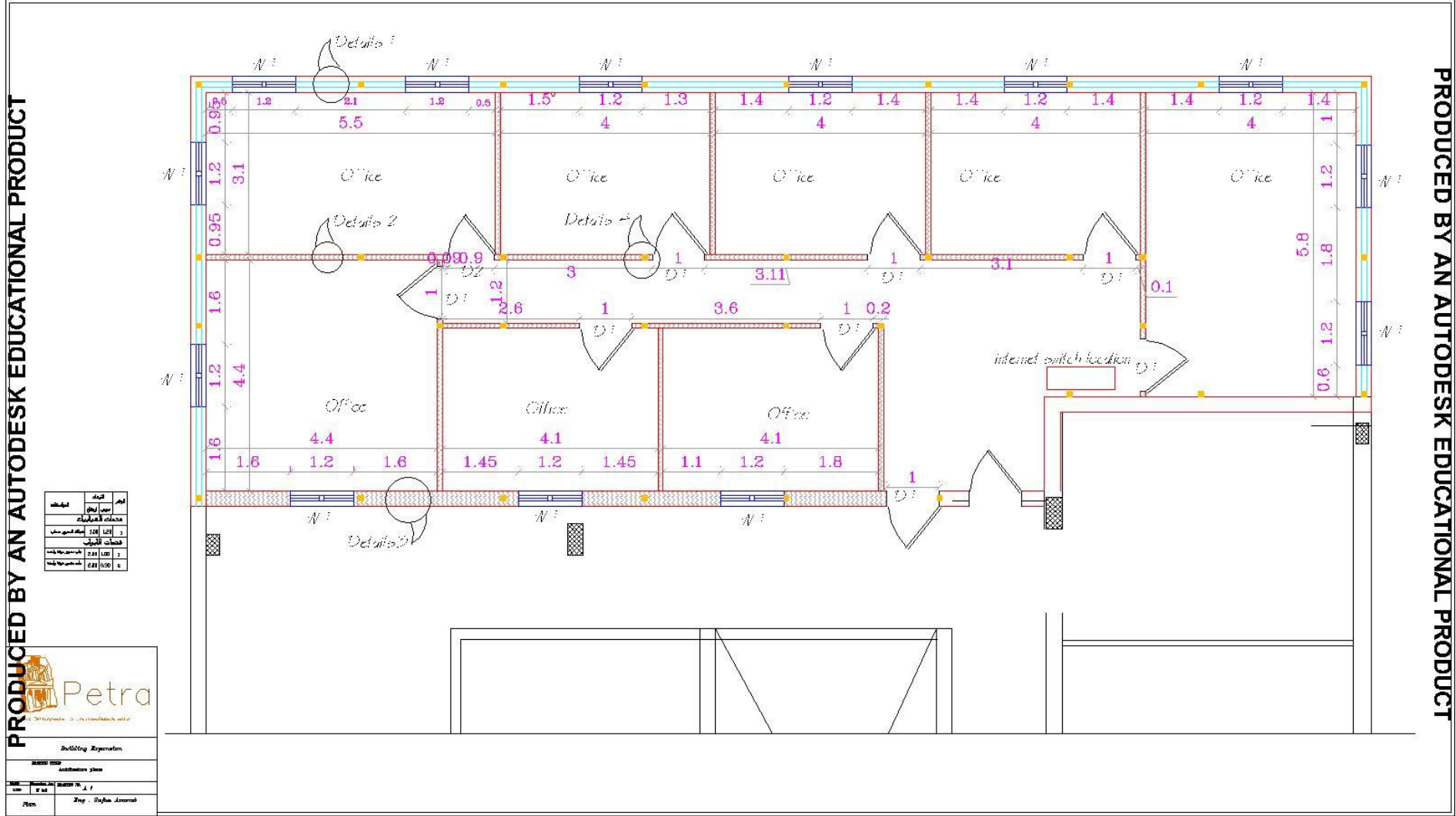


Petra

Petra Development & Tourism Region Authority

*Expansion of the Petra Development &
Tourism Region Authority Building*

2018

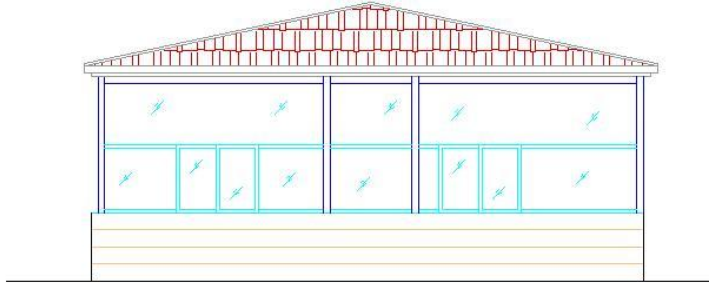
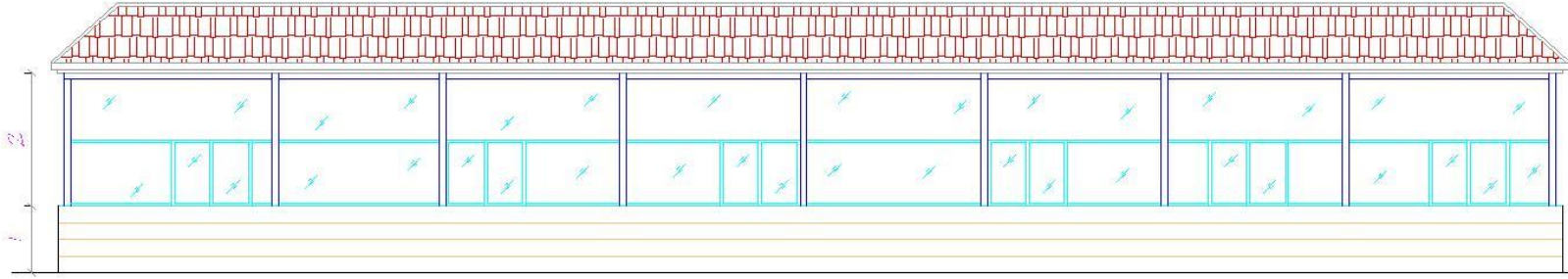



PRODUCED BY AN AUTODESK EDUCATIONAL PRODUCT

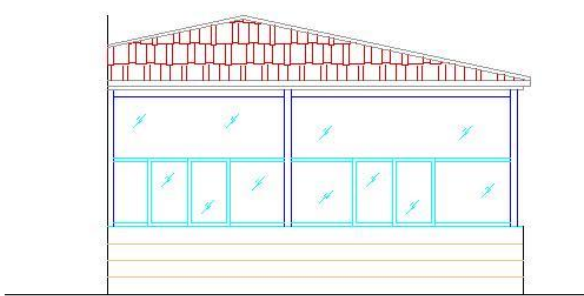
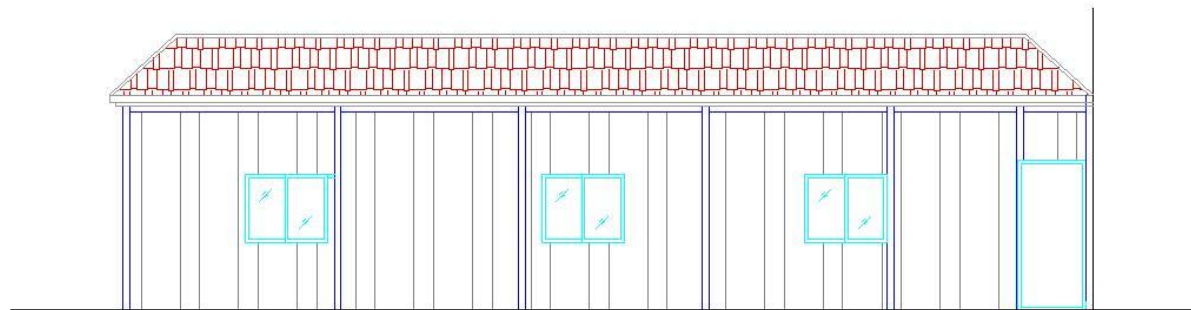
PRODUCED BY AN AUTODESK EDUCATIONAL PRODUCT

PRODUCED BY AN AUTODESK EDUCATIONAL PRODUCT

PRODUCED BY AN AUTODESK EDUCATIONAL PRODUCT



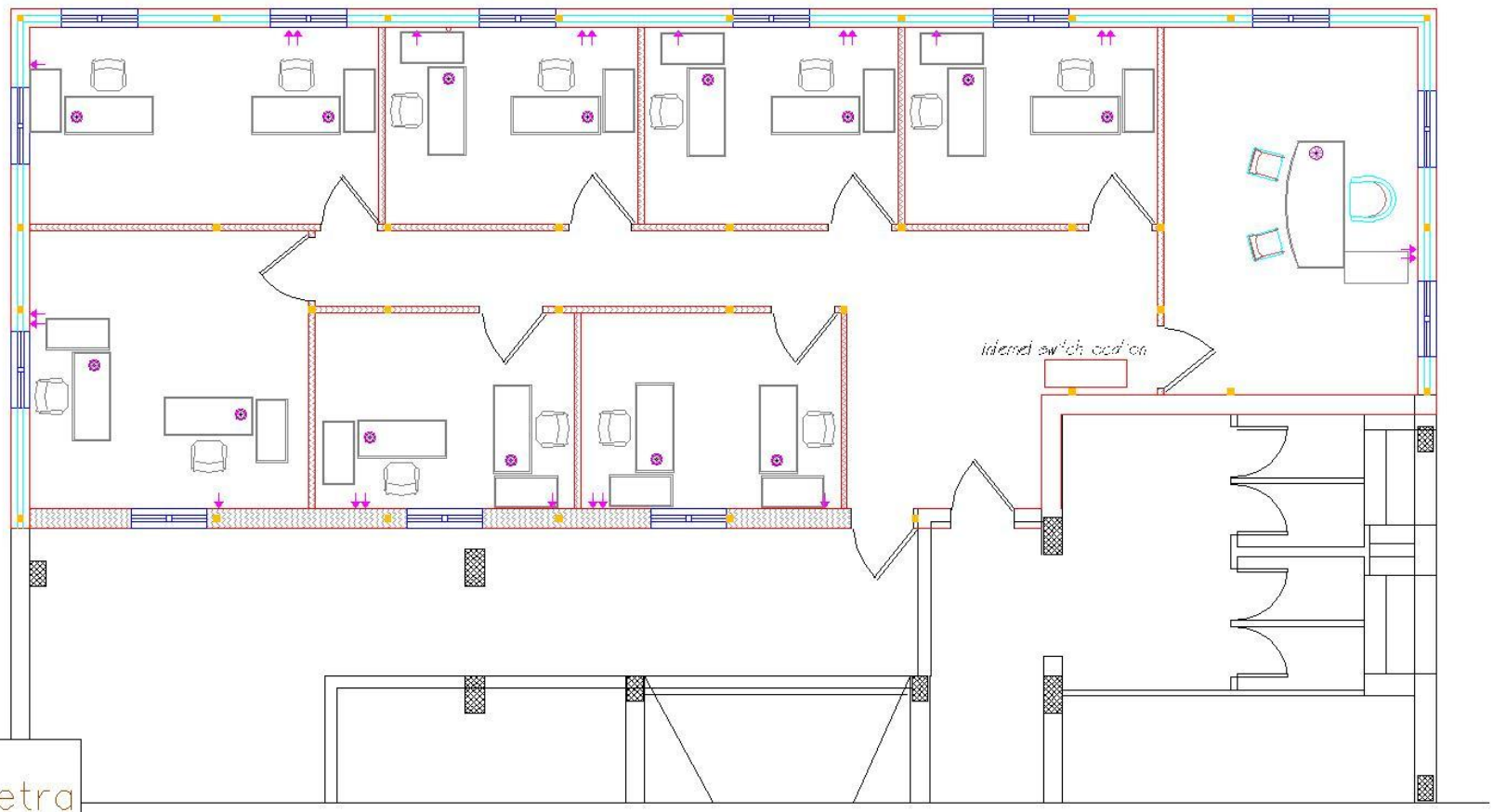
 Petra
Building Expansion
Job Number: 123456789
Date: 10/10/2023
User: John Doe



Petra
 T. 021 25000000 - 021 25000000

Building Expansion
 Jember District
 No. 111
 2020

2020

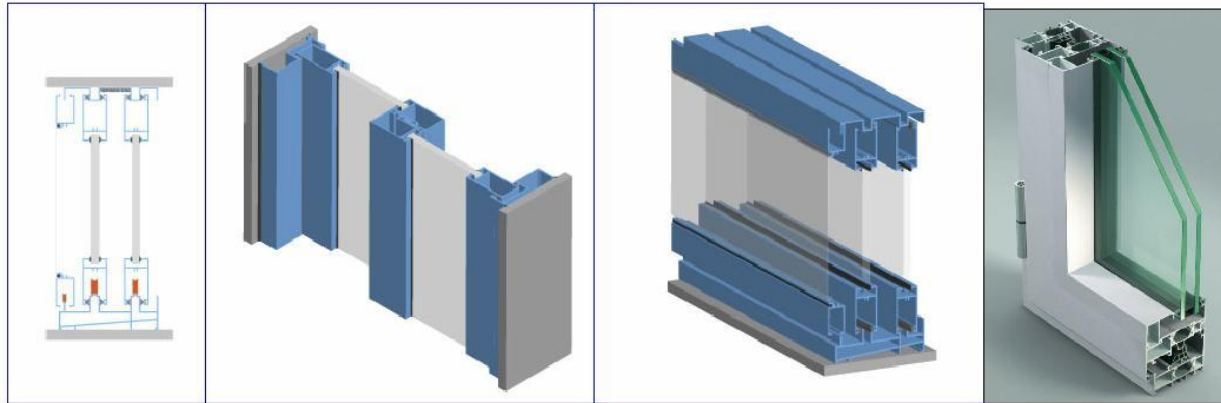


← مخرج شبكة الكابلات (RJ45)

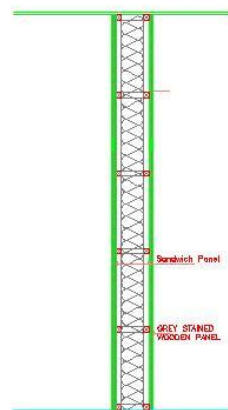
← مخرج شبكة الكابلات (RJ-45)

Petra
 Petra Center - 4, 10, 15th Floor - Jeddah - KSA

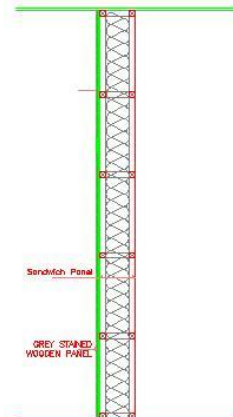
Building Expansion	
Area	3000 sqm
Year	2015
Room	IT Department



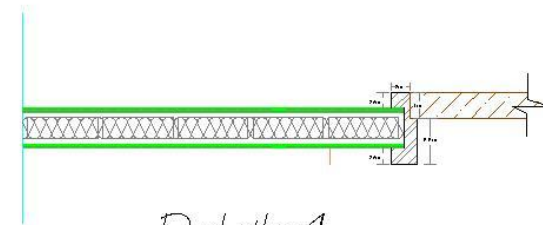
Details 1



Details 2



Details 3



Details 4



Petra

Master Development & Tourism Regulatory Authority

Building Expansion

DRAWING TITLE:
Architecture Wall Details

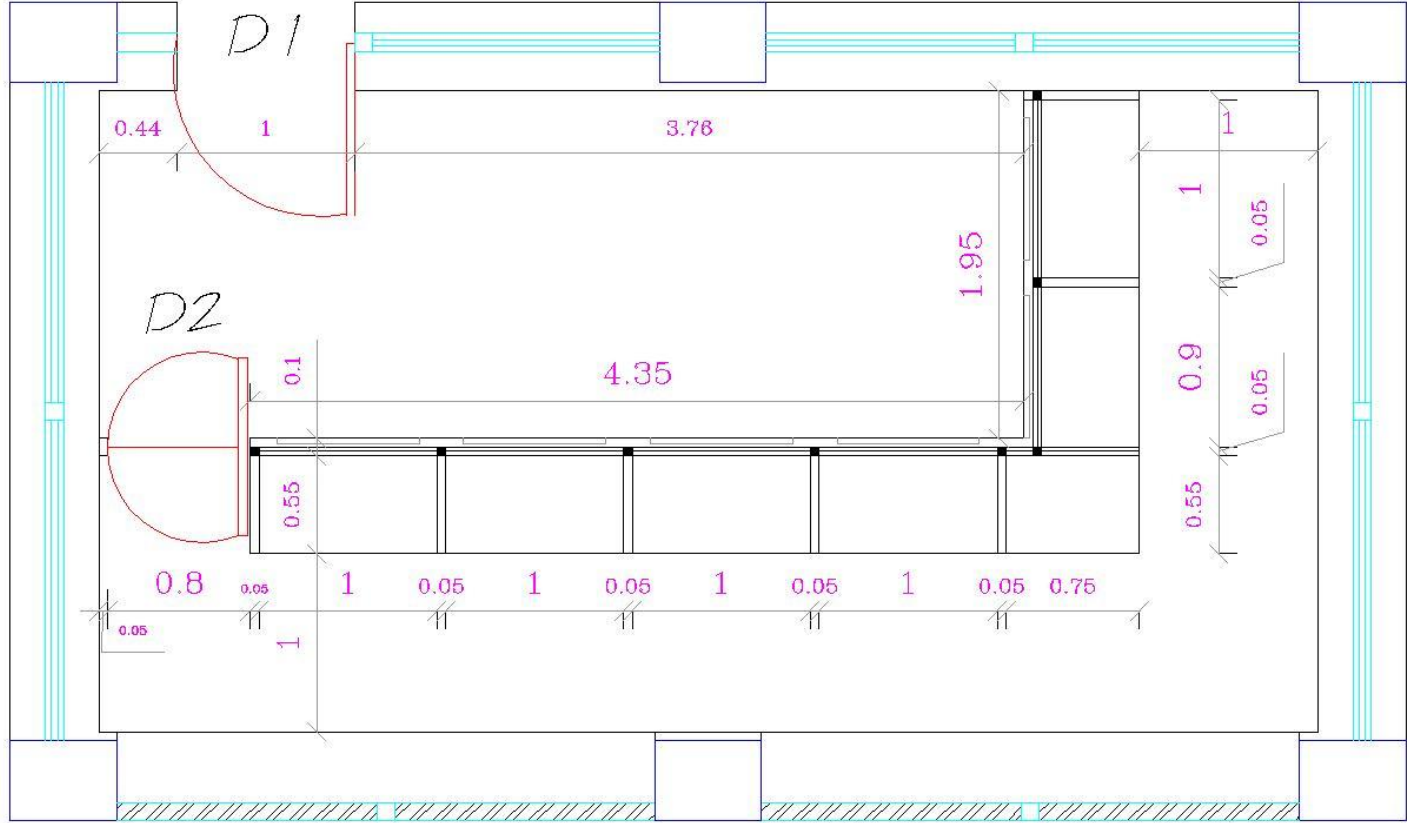
SCALE	Drawn by: JAC	DRAWING NO.
1:100	01 (5a)	A 1

Plan

Eng. Safaa Amarat

PRODUCED BY AN AUTODESK EDUCATIONAL PRODUCT

PRODUCED BY AN AUTODESK EDUCATIONAL PRODUCT



الترتيب	الارتفاع	المساحة
1	2.00	1.00
2	1.80	0.80

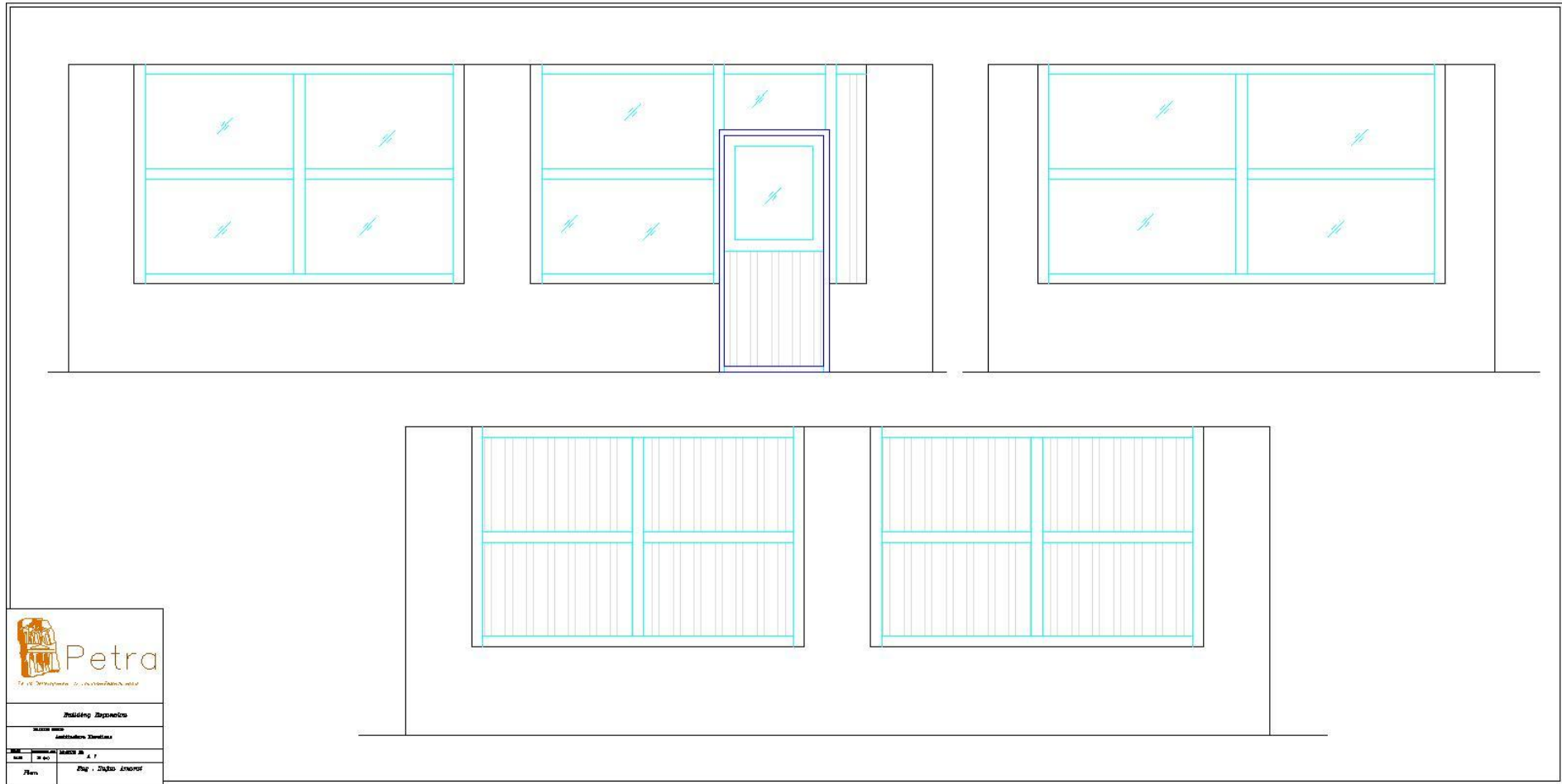


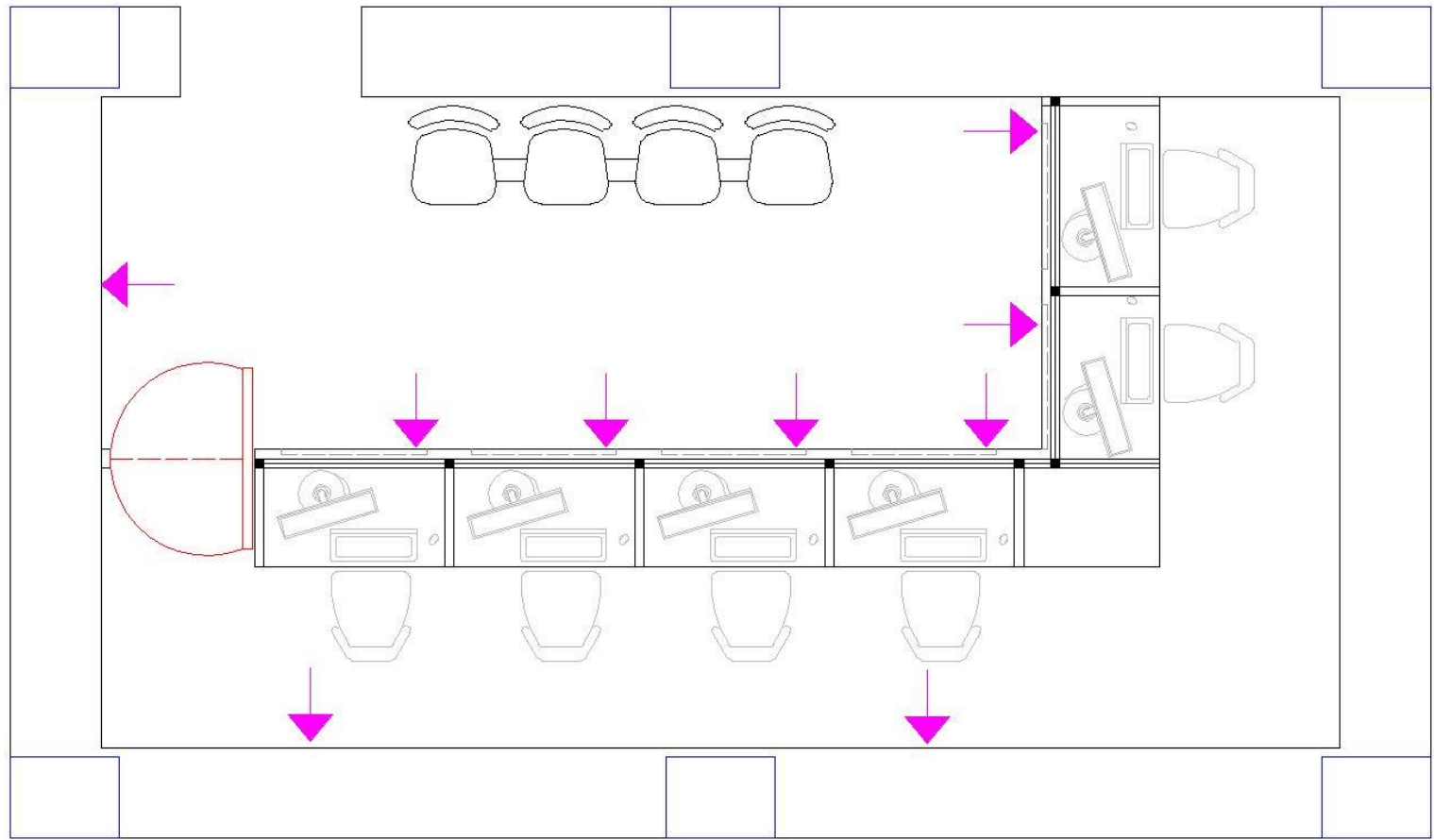
Building Expansion

NAFSA 7702

Architecture plan

Scale	Number of	Author's No.
1/20	37 04	A 3
Plan	Zag - Sofas Amarat	





مفرج شبكة نت مزدوج (RJ45)



مفرج شبكة نت مفرد (RJ45)



Division Expansion

مخطط مفرد

Internal Plan

NO. 1111

NO. 1111

IT Department